

HWY 62
ART
TOURS
2013

The City of Twentynine Palms welcomes art lovers!

We invite you to Stay and Dine in 29!
 Enjoy our Inns and Restaurants. Explore our desert art scene...
 Oasis of Murals ♦ Art in Public Places
 Gallery Exhibitions ♦ Art & Treasure Shops ♦ Artist Studios



Visit the Desert History art show
 at our Visitor Center & Gallery
 73484 29 Palms Hwy. at Desert Queen
 (On display thru Dec. 2013)
 (760)367-6197 ♦ visit29.org

Find Lodging & Dining,
 Music, Theatre 29,
 Smith's Ranch Drive-in,
 and Cultural Arts Events
 on our website:
www.visit29.org



See the "Art Tours Collective" show
 at historic 29 Palms Art Gallery
 74055 Cottonwood Dr. at National Park Dr.
 (On display thru Oct. 2013)
 (760)367-7819 ♦ 29palmsartgallery.com

Aerial Circus at the Big Top 62629 Sunny Sands Dr. Joshua Tree 92252

A night to support the arts.
All proceeds to benefit community arts.

**Zircon
Aerial Entertainment**

with guest host Andy Woods
presents

One Perfect Moment

*In every lifetime there are moments that
can only be remembered as
simply Perfect.*

**Opening Celebration for the
HWY 62 Art Tours**

Sponsored by



ARTS
THE ARTS COUNCIL

CONNECTION
OF SAN BERNARDINO COUNTY

ArtsConnectionNetwork.org Hwy62Art.com



October 19th, 2013
Art Show at 6PM
Circus show starts at 7PM
Afterparty until midnight

\$15 Seat/ \$10 Standing Room
Order Tickets 909-543-9868
Every order by October 15th
will receive a **FREE ticket**
to our Big Top Photo Booth!

HWY 62 ART TOURS SPECIAL EVENTS



OCTOBER 19 & 20

Yucca Valley Community Center
57090 29 Palms Hwy.

Saturday—9:00 a.m. to 4:00 p.m.
Sunday—9:00 a.m. to 2:00 p.m.

Free Kids Classes
Adult Beginner and Advanced Classes

WELBURN GOURD FARM & THE INDIAN STORE

Yucca Valley Chamber of Commerce and Town of Yucca Valley
Call (760) 365-6323 or www.yuccavalley.org for more information

THE ART OF WAR
A SPECIAL ART SHOW AND PERFORMANCE FOR THE HWY 62 ART TOURS

Oct. 25th

Artist: Joan Robey Artist: Tami Wood Artist: Julia Buckley

COLLABORATIONS BETWEEN VISUAL ARTISTS AND MILITARY POETS AND WRITERS.
"THE ART OF WAR" PROJECT GIVES RECOGNITION TO MILITARY POETS AND WRITERS UTILIZING THE POWER OF WORDS AND IMAGES TO EDUCATE THE PUBLIC ABOUT THEIR EXPERIENCES.

AT
RADIO FREE JOSHUA TREE LISTENING LOUNGE
#1597 TWENTYNINE PALMS HWY
FRIDAY 25 OCTOBER DOORS OPEN @ 6:30 PM
PERFORMANCES BEGIN AT 7:00

PRINTING DONATED BY **Oasis** Oasis.com | ArtsConnectionNetwork.org

Hwy 62 Art Tours
YART PARTY
Art Tours Information • Live Music • Food and Fun

October 19-20 and October 26-27
Hwy 62 at Park Blvd. Downtown Joshua Tree

Four Days of Live Music!

- Soul Pattern Project
- Bonnie & Slyde • Shakeh Machin' • Mosey Bravo
- Eva Stokes • Tim Chinook
- JTC Jazz Band • Joel Daniels
- Hickmen • Easier • Outpost
- The Luminators • Patti Leary
- Stone Stanley • Amy Kaps
- THE JOHN LINN BAND**

CUSTOM DESIGNED JOHN LINN GUITAR RAFFLE
Raffle Tickets \$2 ea at Yart Party
Drawing Oct 27 at 3pm - Must Be Present to Win!

HWY 62 ART TOURS COLLECTIVE SHOW
Oct. 2 - 27 at 29 Palms Art Gallery

Works by Art Tours artists are on display and for sale during the Collective show. Exhibit hours are Wednesday through Sunday from 12 noon to 3pm.

ANNUAL CLOSING PARTY
Bobby Furst's "Furst World Studio"
8528 Desert Shadows Rd.
Sunday, October 28 @ 7pm

Enjoy live music, films, art, drinks and food.
This is a potluck party - please bring a dish or finger food to share!

WELCOME TO THE HWY 62 ART TOURS 2013

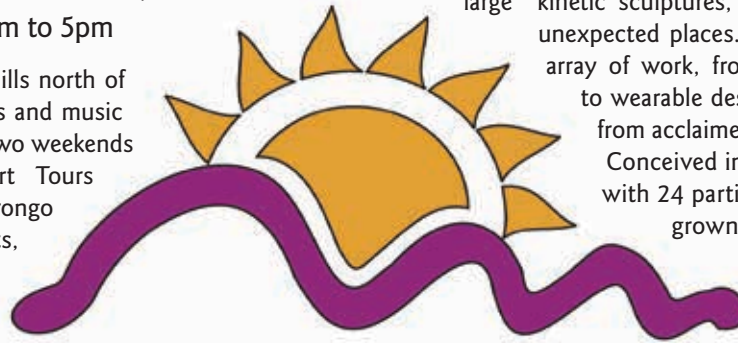
ABOUT THE HWY 62 ART TOURS

OCTOBER 19 & 20 / OCTOBER 26 & 27, 2013

Open Studio Tour Hours: 9am to 5pm

Hidden in the sleepy hi-desert hills north of Palm Springs is an explosive arts and music scene. Every year, over the last two weekends of October, the Hwy 62 Art Tours celebrates the finest of the Morongo Basin's visual and performing arts, along a 30-mile stretch of scenic Hwy 62 between Morongo Valley and Twentynine Palms, and in the communities surrounding Joshua Tree National Park.

One of the largest open studio tours in the nation, Hwy 62 Art Tours is a self-guided tour of private studios, homes, shops, and galleries. The 2013 Art Tours features over 200 artists and 89 open studios. Visitors will find things here they won't find anywhere else -- assemblage art made of reclaimed trash from the desert,



large kinetic sculptures, and secret treasures tucked into unexpected places. Each year brings an astonishing array of work, from paintings to pottery, furniture to wearable designs, to photography and fine art from acclaimed (and sometimes famous) artists.

Conceived in 2001 as a festival for *all* the arts, with 24 participating artists, the Art Tours has grown into a destination attraction. An estimated 8,000 visitors come each year from all areas of California, and from as far away as New York and Canada, to enjoy the scenic byways of the

Hi-desert, our breathtaking views, blue skies, clean air, and bright stars that give our artists such inspiration.

We hope our visitors find themselves equally inspired.




Carey Hays

Executive Director, MBCAC / Hwy 62 Art Tours

HOW TO USE THIS CATALOG

Nearly 90 open studios are showing on this year's Art Tours! Use this catalog to browse for artists you want to see, and use the map to plan your routes (hint - start with one that's furthest away and work your way inward; the studios on the outer reaches often have the best art).

Some things to note:

- Studio numbers are color-coded by weekend:
 First Weekend  Second Weekend  Both Weekends
- Studios are listed in numerical order in the catalog.
- **INFORMATION IN THIS CATALOG IS SUBJECT TO CHANGE.** Visit www.hwy62arttours.com for the most current and more complete information, plus artist bios, and more art samples.
- An alphabetical index (by first name) of artists is provided on the back of the maps section in this catalog for easy look-up.
- **IMPORTANT:** Maps are intended to be a general guide; locations may not be accurate. Always check the written directions on the artist profiles, and follow the signs during the event.
- Leave yourself plenty of time to navigate unfamiliar roads.
- Twentynine Palms Highway and Hwy 62 are the same road, either or both names may be used.
- GPS and online maps aren't always accurate in rural areas, and sometimes do not work at all.
- Use caution when driving on dirt roads, and avoid driving on soft sand - you will get stuck.
- Always carry layers of clothing; warm days can give way to chilly evenings. The climate is very dry here; carry lots of water with you.

YEAR OF THE SNAKE:

Catalog Cover Art by Snake Jagger

By Tami Wood

Snake Jagger is a surrealism painter. For more than 30 years Snake has been painting. He has experimented with odd shaped canvases, painted several murals in the Palm Springs area, and most recently has been honing his skills at abstract and recycled assemblage.

After living in Palms Springs all his life, he wanted to broaden his horizons, and indeed he did. Looking in Morongo Valley, he got his wish about a year ago when he came across the cutest little trailer ever, silver and white with a yellow stripe. The retro trailer had an address sign in the shape of a painter's palette, and he knew it was meant to be. When not in his studio, you can find Snake in his yard, building fences, planting gardens and installing fountains.

When you step onto Snake's property you will be transformed into one of his paintings. Snake is a self proclaimed "neat freak," and keeps his property "pretty as a picture." Come visit Snake on the Hwy 62 Art Tours on Oct. 19 & 20 (Studio #8). Snake is delighted to be in the Morongo Basin. He has recently booked a show at The 29 Palms Art Gallery in January of 2014, and is working with The Morongo Valley Art Colony.

You can enjoy his work at snakejagger.com and at snakejagger.weebly.com. For more information and commission work call (760) 641-6342.

artwork designed & created by
Shari Elf, Kathy Barta
and Leslie Mariah Andrews

HWY 62 ART TOURS

hwy62arttours.com

2013

LIMITED EDITION
12x18 Poster Prints
Sold throughout the
Hi-desert and at
Hwy62ArtTours.com



OCT. 19 & 20
~ WEST END ~

Morongo Valley
Yucca Valley
Pioneertown
Landers
Joshua Tree

OCT. 26 & 27
~ EAST END ~

Joshua Tree
Twentynine Palms
Wonder Valley

Mike Smiley's Life as an Artist

by Karine Swenson



This year, our community lost one of its most beloved artists. The sculptor Paul Michael "Mike" Smiley passed away unexpectedly on May 10, 2013.

His place as a great desert artist and dearly loved friend is firmly established. Others have already written and spoken of his generous nature, his kindness towards everyone he met, and his willingness to help others. Even though I could go on and on about those qualities, for this article I would like to write about his life as an artist.

Smiley came to art later in life, after a one-year stint in Vietnam and a career as a police officer in Stockton, CA. While still working as a policeman, he was with a girlfriend one day visiting galleries, and they saw a sculpture of a whale, carved in stone. He said to his companion, "I could do that." She didn't believe him, so he set out to prove her wrong.

That pivotal moment was the beginning of his career as an artist. He had already been taking photographs for the police department, and he began using his camera to create artistic imagery. He found that chasing people with a camera was much better than chasing people with a gun.

Although Smiley started with photography and stone carving, he soon added jewelry making to his repertoire. When Smiley was a kid, he remembered his father making

jewelry and doing lapidary. Mike had even experimented with jewelry in high school. Smiley started creating jewelry in earnest after he and his wife Betty moved to Desert Hot Springs in 1990.

Welding came last for Smiley. When his father died, he left Mike a welder. That, plus his friendship with Steve Rieman sparked his interest in metal. Betty told me when he first started welding, he accidentally set the side of their garage on fire. He called her at work and said, "First of all, I'm okay..." before breaking the news to her.

Accidents are bound to happen when working with stone and metal. I distinctly remember one day watching him weld and use the plasma cutter, sparks flying, when I looked down and saw his feet clad only in flip flops. I had to ask (feeling impressed at his bravery), "Why?"

Apparently, when he first started welding, Betty suggested that he reconsider his usual footwear for real shoes. (One of the reasons he always wore flip flops was to help with jungle rot that he had gotten in Vietnam. Keeping his feet dry and in the open air helped prevent the rash from returning.)

He took her suggestion the next time he went out to weld, with wool socks and lace-up boots. Unfortunately, a piece of hot slag dropped down between his boot and his sock and SET THE SOCK ON FIRE. Unable to get the boot off in time, Smiley suffered a significant burn on his ankle. That was the end of shoes for Mike while welding.

Largely self taught, Smiley read many books about sculpting, working in metal, and making jewelry. He did take one jewelry class at College of the Desert, just to get a few basic skills down. But as he once told me, his creativity was innate.



Continued next page...

HWY 62 ART TOURS 2013 - FEATURE

Mike Smiley continued...

When he and his wife of 18 years, Betty Young, first got together, the biggest adjustment she had to deal with was Smiley's tendency to wake up in the middle of the night to sketch out ideas for art. He told her he had to just "get it out." He always said he had more ideas than he would ever be able to create and he always enjoyed switching around from stone to metal to jewelry.

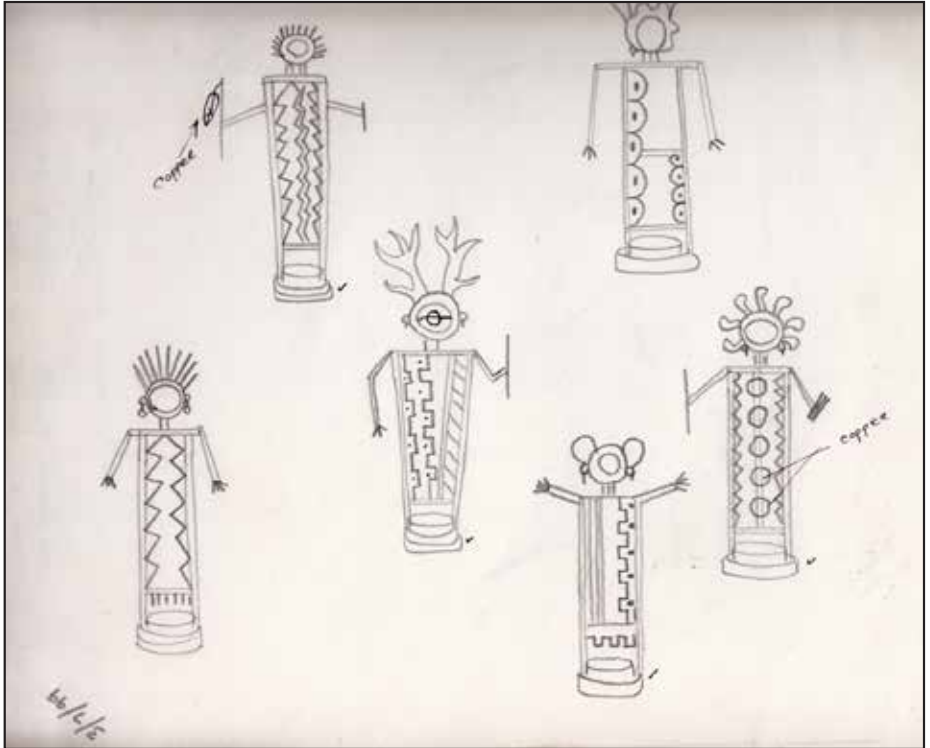
As an artist, Smiley did more than talk the talk. He walked the walk. To be as prolific as Smiley demands a lot of time and dedication to the practice of art making.

In the words of one of Mike's non-artist friends, Laraine Turk "Though I met Mike Smiley through birding, in becoming his friend I came to understand an artist's creative spirit and also the hard work that comes with artistic vision and inspiration."

Betty told me that sometimes Smiley would go out to the studio to work after dinner or on the weekend. Mike usually made dinner for them, but Betty remembers there would be days when she would come home late from work and find Smiley still out in the studio, working. He would look up in surprise and ask, "What time is it?"

A versatile artist, Smiley was able to create works of art specifically for clients as well as executing his own ideas. Sculpting in metal and stone takes a physical toll, but Smiley would laugh at his scars, and his good nature never reflected his days of hard work in the studio.

Anyone who has seen Mike Smiley's art will notice his



influences. He told me once that the world is full of treasures – pretty stones, rusted metal and animals. Smiley's great love and appreciation for nature are evident in each piece he created. Smiley was an amateur naturalist. An avid birder, many of his sculptures depict the birds he knew intimately. Many of his birder friends will tell you that he could identify many birds no one else seemed to recognize. (Or even spot.)

If you ever had a rattlesnake invade your home or garage, Smiley was the person to call. He once taught a class about how to "wrangle a rattlesnake." It was his belief that rattlesnakes are an essential link in the desert ecosystem, and that we should try not to harm them if we could help it. He made me look at rattlers in a whole new way.

Smiley also found inspiration in the mythology of the Native Americans. He loved petroglyphs and primitive art as well as collecting rocks and rusty metal. One of the reasons he made jewelry was so he had an excuse to rock hunt.

His art often combined aspects of his interests: a pendant made using beautiful stone that he had carved as a shaman-inspired face, or a giant bug made from rusted parts he salvaged. He even used a cuttlefish to create a pattern on silver in some of his jewelry. Whatever the artwork, Mike Smiley's simple but heartfelt approach to form was what distinguished his unique style.

Smiley has left behind a legacy of art that will be enjoyed by many for a long time to come.

THE 2013 ART TOURS
ARE DEDICATED TO THE
MEMORY OF MIKE SMILEY



NATURE LOVER



ARTIST



MENTOR

BELOVED FRIEND



“Meet the Artists” Video Interview Series

Of 130 artists in this year's Art Tours, 16 were randomly chosen for video interview and featured on our website and Facebook pages in the weeks leading up to the Art Tours. See all the artist interviews online at hwy62arttours.com or youtube.com/hwy62art.

Andrea Jungert Studio #40 Andrea Jungert is an artist of multi disciplines. From actor, writer & director to an all around creative with a mad passion for designing unconventional knitwear and doing mosaic tile work.

Hilary Sloane Studio #68 Growing up between New York and Los Angeles, Hilary Sloane was always interested in the visual arts. With a 35 year creative career spanning photography, fine art, film and fashion, Hilary Sloane found her passion for shooting while working with some of advertising's top photographers and traveling the world.

Steve Rieman Studio #46 Since 1979 sculptor Steven L. Rieman has lived and operated his studio in Yucca Valley, California. His work asks questions about the balance between advancing technology and the preservation of the natural environment. Many of his works are kinetic, activated by the wind.

Ellie Tyler #63 Award-winning nature photographer, Ellie Tyler's images reveal a simplicity of line, boldness of color and a strong sense of harmony. Ellie is inspired by the clean, bold lines and light of the desert southwest landscape of her adopted home.

David Jesse McChesney Studio #66 David Jesse McChesney has photographed 55 American national parks and markets nature, wildlife and birdlife imagery in several parts of the country. He is the advanced photo instructor for the Desert Institute at Joshua Tree National Park and recently authored the book "The Mojave Desert: Miles of Wonder" which is carried in national parklands and 10 desert museums.

Doug Whitfield Studio #83 Stained Glass Classes: Doug Whitfield is a masterful stained glass artist who enjoys teaching the art of glass at the Creative Center. Doug also creates custom designs for a site specific location in your home or office, as well as stained glass repairs.

Sebastiano Grasso Studio #2

Sebastiano Grasso, native of Erice, Italy, has been a resident of the high desert for the past two years who draws from his life experiences in Southern Italy, Miami, San Francisco, Los Angeles and the High Desert. His simplistic style uses a variety of mediums including oil on canvas and mixed media assemblage to demonstrate his faith in the power of whimsical and life affirming imagination.

Scott Doten Studio #50 Scott Doten, artist & designer for 28 years. He enjoys making sculptures and furniture. His fine art combines metal, glass, and wood, sometimes incorporating found objects. Scott also makes mosaic tile, producing floor inlays depicting natural scenic subjects, as well as occasionally using tiles in his furniture designs. He even enjoys painting abstract and landscape scenes on canvas.

Snake Jagger Studio #8 Snake Jagger refers to his artistic style as Whimsical Surrealism. He is an artist who, while dedicated to the subtle exposition of his personal philosophy, doesn't take himself too seriously and is comfortable working with his tongue planted firmly in cheek.

Diana Shay Diehl Studio #25 Diana's love of using photography to capture the nuances of life has been a life long venture beginning with formal training in black and white film processing under the tutelage of Andrew Schumaker, a photographer and student of Ansel Adams. She specializes in environmental and lifestyle portraits and getting close to her subject in the natural or industrial world.

Marjorie Franklin Studio #65 A native Californian, Marjorie Franklin holds a BFA from the San Francisco Art Institute in Filmmaking and an MFA from San Francisco State University in Conceptual Design. Since moving to Joshua Tree, her art practice has focused mainly on painting in oils.

Michael Eiden Studio #89 A successful jewelry artist and kinetic sculptor, Michael's creative background includes



nearly 50 years as an actor and theatrical director. Currently he directs an acting troupe of developmentally disabled adults and young people.

David Greene Studio #88 A self-taught artist, David made his artistic debut as a caricature artist at Ameriflora 92, an international floral show held in Columbus, Ohio the spring and summer of 1992. Since moving to Twentynine Palms David's work has appeared in various group and solo shows. In 2008 he was commissioned to paint six 4 ft x 8 ft murals for the Holiday Inn Express in Twentynine Palms.

Karine Swenson Studio #64 Her desire with painting is to create work with the power of Mozart combined with the originality and freedom of the punk bands she listened to in the 80's. Swenson lives in Joshua Tree, where the desert landscape and the animals that live there have a huge influence on her art.

Daniela Bellissimo Studio #38
www.italiancactus.com

Lisa Starr Studio #74 Lisa Starr has been making drums for over a decade and has her own business crafting shamanic drums, teaching workshops and healing with Drum Medicine. Her wisdom and experience is shared in the richness of ritual, ceremony and healing for groups and individuals. Lisa now includes rattle making as part of her craft.

2013 OPEN STUDIO ART TOURS



Kate Madigan
katemadigan.com



Showing First Weekend
With Laura Eaton, Patrice Cooley

49010 Paradise Morongo Valley

Title: Replenish
Oil Painting
Size: 18x20
Year: 2013



Laura Eaton



Showing First Weekend
With Kate Madigan, Patrice Cooley

49010 Paradise Morongo Valley

Title: 11 Circuit Labyrinth
Walking meditation
Size: 35 1/2' x 251/2'
Year: 2011



Patrice Cooley



Showing First Weekend
With Kate Madigan, Laura Eaton

49010 Paradise Morongo Valley

Title: Family Farm
Size: 30" x 30"
Year: 2012

Studio 1 Directions from Hwy 62 East:

1. Turn left onto Hess Blvd. If you reach Adeline Way you've gone a little too far.
2. Take the 1st left onto Canyon House Blvd. If you reach Matzene Dr you've gone a little too far.
3. Take the 3rd right onto Juniper Ave. Juniper Ave is 0.1 miles past Rosewood Ave. If you reach Sun Ray Rd you've gone 0.4 miles too far.
4. Take the 3rd left onto Paradise Ave. Paradise Ave is 0.1 miles past Matzene Dr. If you reach Senilis Ave you've gone a little too far. At the "Y" keep left. First house on the right.

2013 OPEN STUDIO ART TOURS

Sebastiano Grasso

Showing Both Weekends



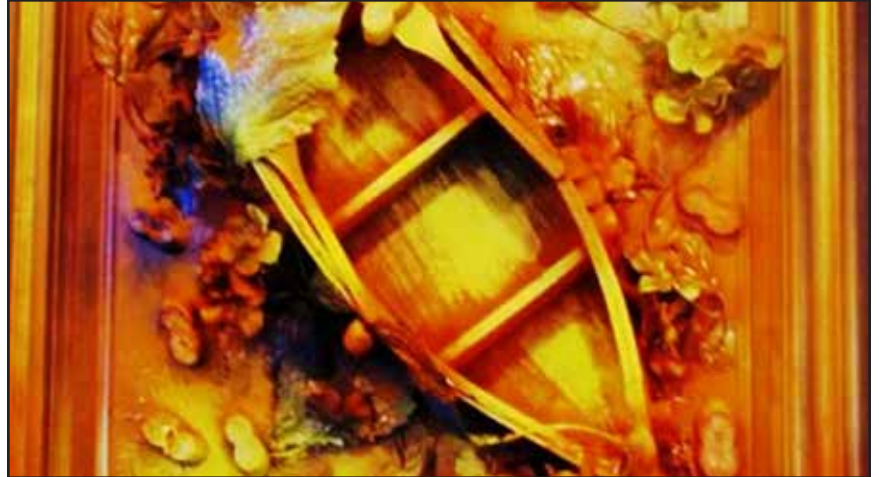
11398 Juniper Ave Morongo Valley

Directions from Hwy 62 Driving East: Take a Left (North) at Senelis Ave. (only stoplight in Morongo). Go 200 ft. to stop sign and take a left(East) which is still Senelis Av. Go approximately one mile to next stop sign at "T" intersection. Take a left onto Juniper Ave. Pass red barn. Second house on right after Paradise Ave. Chain link fence and covered porch with flags. Follow driveway to back of property and park.

Title: *La Barca Dell' Inverno*

Size: 28 x 24

Year: 2012



Cactus Mart

Purple Agave Art Gallery

www.cactusmart.net

Showing Both Weekends

49889 29 Palms Hwy, Morongo Valley

Directions from Hwy 62 Driving East:
Located right off Hwy 62 in Morongo Valley



Leah Solo

www.leahsolo.com

Showing First Weekend

10745 Pinon Ave

Directions from Hwy 62 Driving East: Make the first left on hwy 62 (heading towards Joshua tree) the street name is Hess, continue on Hess until it dead ends onto pioneer and that will dead end onto Pinon. Make a right onto the dirt road, the second house on the right.

Title: *Passion Party in Pink*

Made with acrylic and pastels

Size: 14x12 Year: 2013



2013 OPEN STUDIO ART TOURS



Kathryn Butterfield

Showing First Weekend

10369 San Geronio, Morongo Valley
Directions from Hwy 62 Driving East: Left on Hess, left on Pioneer, right on Juniper, left on Palo Verde, right on San Geronio. First house on right.

Title: Memories

Pow Wow dancers are a frequent theme of Kaki.

Size: 18 x 24

Year: 2013



James Hagerty

www.hagertyart.com

Showing First Weekend

49988 Aspen Drive, Morongo Valley
Directions from Hwy 62 Driving East: Headed NE on Hwy 62 turn left onto Valley View Rd. Go a little over one mile to Aspen Dr. Turn left and go a little under a mile to intersection with Morongo Way. Studio address is 49988 Aspen Dr. on NW corner.

Title: Phantom

Size: 30x24

Year: 2012



Patrick Kelly

www.thepatrickettstudio.com

Showing First Weekend

10257 Valley View, Morongo Valley
Directions from Hwy 62 Driving East: Approx. half a mile after traffic light in Morongo Valley, turn left on Valley View, first house on the right, look for flags.

Title: "Super Chief"

Mixed media on canvas

Size: 60"x72"

Year: 2012



2013 OPEN STUDIO ART TOURS

Snake Jagger

www.snakejagger.com

Showing First Weekend
With Tami Wood

51063 29 Palms Hwy #19, Morongo Valley

Title: Enchanted Desert

*This painting was used as the poster art for the 2009
Indian Wells Art Festival*

Size: 36" x 48"

Year: 2009



Tami Wood

www.tamiwoodcreations.com

Showing First Weekend
With Snake Jagger

51063 29 Palms Hwy #19, Morongo Valley

Title: Tied Up

Year: 2013



Studio 8 Directions from Hwy 62 Driving East: Take Hwy62 up to Morongo Valley. Continue past Willie Boys. Destination will be on your right. Look for a sign "Roadrunner". Driveway winds around. Home is yellow, and there will be signs to follow.

Directions from Hwy 62 Driving West, the left turn is blocked by CalTrans work. Please travel past the park and make U-turn at next street. Look for banners and signs to lead you to the magical compound.

Dan Bartlett

Showing First Weekend

8686 Little Morongo Rd., Morongo Valley

Title: The swing

Size: 15" x 30"

Year: 2012



Directions from Hwy 62 Driving East: Take Hwy 62 62 (1 block past T circle) to Little Morongo Rd. and turn left. Turn left again on Breeze Wy. Make the first right on T circle. Beige house on the left corner. Property is marked at corner with stone sign reading 8686 and metal lizard on it at the corner. If left turn is blocked: 62 East to Rose Eden Rd. (turn left) continue to Breeze Way (turn left) continue to T circle (turn right). We are in the first house on the left light beige colored.

2013 OPEN STUDIO ART TOURS



Succulent Surprises

www.succulentsurprises.com
Showing First Weekend



8524 Little Morongo Rd. Morongo Valley

Directions from Hwy 62 Driving East: Turn Left onto Little Morongo Road. Continue on Little Morongo Road until dead end. Turn Left onto Alta Dena. Continue on Alta Dena until dead end. Turn Left on T-Circle Drive - Little Morongo Road. Right Turn into 8524 Little Morongo Rd.

Title: Neon Breaker in Blue Dish

Size: 7" diameter x 4" tall

Year: 2012



Jason Graves

www.jasongravesart.com
Showing First Weekend



54945 Hoopa Trail, Yucca Valley

Directions from Hwy 62 Driving East: Take Kickapoo Trail (Next to 7/11 store) Right (S) 1.2 miles. It merges Right (W) with Hoopa Road .3 miles until it dead-ends at Great House Lane. Left (S) on Great House Lane .1 miles. Road is a little rough, take your time.

Title: Transition 8122

Size: 48" x 60"

Year: 2013



Jimm & Joann Petersen

Showing Both Weekends



56701 Chipmunk Trl, Yucca Valley

Directions from Hwy 62 Driving East: Take a left (N) on Old Woman Springs Road (Hwy 247) to the first light (3.5 mi) Skyline Ranch Road / Buena Vista. Turn left on Skyline Ranch Rd. Turn left on the second street Grand Ave. Go to stop sign and turn right on Chipmunk Trail. 1st or 2nd driveway on the left.

Title: Vision Out of Snow

Size: 16 x 20

Oil on Canvas

2013 OPEN STUDIO ART TOURS



Bill Dahl

www.billdahlphotography.com



Showing Both Weekends with Deane Locke, Paul Klopfenstein, Kathi Klopfenstein

5330 Grand Ave., Yucca Valley

Title: Bristlecone Pine - Patriarch Grove

Available in a variety of sizes.

Size: 18" x 12"

Year: 2011



Deane Locke

www.dlockefineart.com



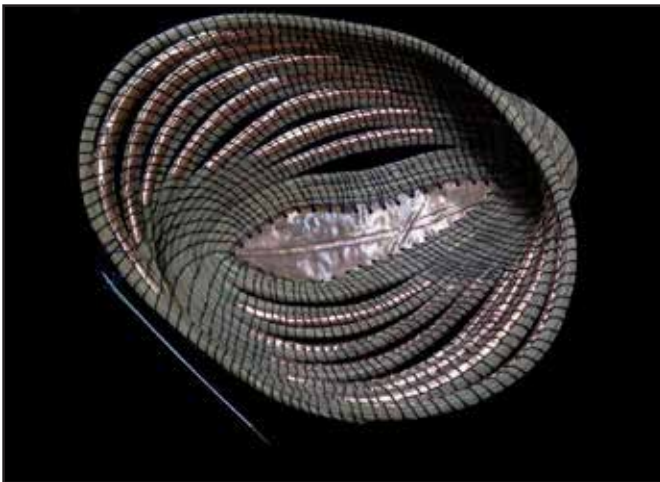
Showing Both Weekends with Bill Dahl, Paul Klopfenstein, Kathi Klopfenstein

5330 Grand Ave., Yucca Valley

Title: "Mr. & Mrs. Blue Bird"

Size: 10" X 8" unframed

Year: 2012



Kathi Klopfenstein

Showing Both Weekends with Deane Locke, Bill Dahl, Paul Klopfenstein

5330 Grand Ave., Yucca Valley

Title: Expanding Influences

Size: 7" x 8"

Year: 2013



Paul Klopfenstein

Showing Both Weekends with Bill Dahl, Deane Locke, Kathi Klopfenstein

5330 Grand Ave., Yucca Valley

Title: Interpretation

Gourd, woodburned, archival ink

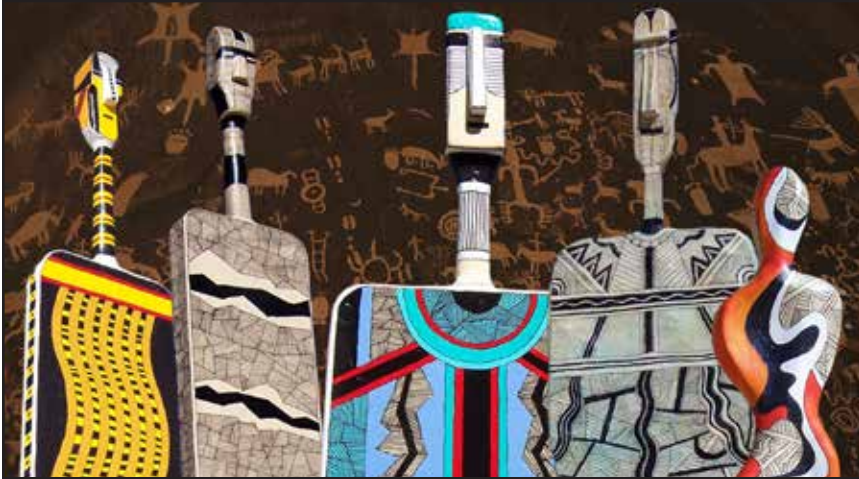
Size: 3.75" x 8.5"

Year: 2013



Studio 13 Directions: Heading East on Hwy 62, turn left (north) on to Old Woman Springs Road/ Hwy 247 to the first light (Buena Vista / Skyline). Turn left on Skyline Ranch Road. Turn left on to Wallaby. Turn right on to Grand. Look for 5330 Grand.

2013 OPEN STUDIO ART TOURS



Salvatore Sinare

www.salvatoresinareart.com



Showing First Weekend

56375 Cobalt Road, Yucca Valley

From Hwy 62 Driving East: turn left (North) on Old Woman Springs Rd. (Hwy 247). Go approx. 1.5 miles to Cobalt Road, turn left (West). (Alternately, turn left on El Cortez, one street before Cobalt, which is safer. Then turn right on Buena Suerta to Cobalt.) On Cobalt, go approx. 1.3 miles to house on left at 56375 Cobalt (cross street is Cholla).

Title: Tribal Series 2013

These mixed media sculptures range in height from 3ft to 6ft, with varying widths.



Bobette Milici

Showing First Weekend
With Tony Milici



2808 Ox Yoke Pass, Pioneertown

Title: Stained Glass Shutters
Stained Glass
Size: 12" x 35" each shutter
Year: 2012



Tony Milici

Showing First Weekend
With Bobette Milici



2808 Ox Yoke Pass, Pioneertown

Title: So Kiss Me
Size: 30x20x10 inches
Year: 2013

Studio 15 Directions From Hwy 62, north onto Pioneertown Road until it turns into Rimrock Road. Continue on Rimrock Road, turn left onto Burns Canyon (approximately 4.5 miles past Pioneertown), right onto Ox Yoke Pass. Alternate route: From Old Woman Springs Road (Hwy 247), west on Pipes Canyon to the very end. Right on Rimrock Road, left on Burns Canyon and right on Ox Yoke Pass.

2013 OPEN STUDIO ART TOURS

Pioneertown Music
johnlinband.com



Showing Both Weekends

53590 Mane St., Pioneertown

Directions from Hwy 62 Driving East: Take Pioneertown road in Yucca Valley four miles west to Pioneertown and park at Pappy and Harriets. Walk to Mane street across from the Pioneertown bowl.

Title: *The Desert Wolf*
Size: 13x34
Year: 2013



MazAmar Pottery
Thomas and Amara Alban
www.MazAmar.com



Showing Both Weekends
With Geoffrey Fennell

53626 Mane Street, Pioneertown

Title: *Grouping of Functional Art Pottery*
Size: Various
Year: 2013



Geoffrey Fennell



Showing Both Weekends
With Thomas and Amara Alban,
MazAmar Art Pottery

53626 Mane Street, Pioneertown

Title: *Midnight Owl*
Size: 24x24 inch
Year: 2012



Studio 17 Directions from Hwy 62 Driving East: Turn Left (N) on Pioneertown Road and follow up to the Pioneer Bowl in Pioneertown just past Pappy & Harriet's. Park at the bowling alley and walk across Mane Street -- you'll see "Pottery" in large letters across top of building.

2013 OPEN STUDIO ART TOURS



Audrey Green

Showing First Weekend
With Suzen Smallwood

5462 Roy Rogers Rd., Pioneertown

Title: Mexican Pot with Lemon
Acrylic on canvas
Size: 12x16
Year: 2011



Suzen Smallwood

Showing First Weekend
With Audrey Green

5462 Roy Rogers Rd., Pioneertown

Title: Kampala necklace
This is a chain of my original design using soldering and hand work. I use many different semi-precious stones. The sterling silver heart is cast in solid silver.
Size: 16 inches
Year: 2010



Studio 18 Directions from Hwy 62 Driving East: Turn Left [n] on Pioneertown Rd. and follow, going past Pappy And Harriets a few streets. Turn left on Roy Rogers Rd. To 5th house on right side. 5462 Roy Rogers Rd.



Lulu Stewart

www.lulusart.com

Showing Second Weekend

54730 Sandy Way, Yucca Valley

Directions from Hwy 62 Driving East: Turn left onto Pioneertown Rd 2.3 mi. Turn right onto Sandy Way. Destination will be on the right.



2013 OPEN STUDIO ART TOURS

Cafe Ma Rouge
Jerry & Justina Looney
www.marouge.net



Showing Both Weekends

55844 29 Palms Hwy, Yucca Valley
Directions from Hwy 62 Driving East: on the corner of Hwy 62 and Pioneertown Road in Yucca Valley

Title: Emerald City
Artist Jerry Looney
Size: 50x72
Year: 2013



Sweet Digs



Showing Both Weekends

55838 29 Palms Hwy, Yucca Valley
Directions from Hwy 62 Driving East: On the left side of the highway in the heart of Yucca Valley's Old Town. Just before Pioneer Crossings Rd.

Featuring the work of several local artists:
Andrea Dale - Paintings, Jewellery
Tara Rogers - Living Art Floral Design
Dan Lavley - Woodworking
Jai Lust - Photography
Susan Mitchell - Coyote Paw Ceramics



Rainbow Stew
www.rainbowstew4u.com



Showing Both Weekends

55509 29 Palms Hwy, Yucca Valley
Directions from Hwy 62 Driving East: West end of Old Town Yucca Valley on the South side of Hwy 62 between Inca and Geronimo.

Support local artists from the Southern California High Desert Communities!
Find lots of artwork from our local artists at Rainbow Stew.



2013 OPEN STUDIO ART TOURS



Friderich Rudolph

Showing First Weekend



55682 Navajo Trail, Yucca Valley

Directions from Hwy 62 Driving East: Left turn on Fox, 3 blocks to Navajo, make right turn.

Sculpture



Sanford Berlove

www.thebigpicturenow.com
Showing First Weekend



7654 Lucerne Vista Ave, Yucca Valley

Directions from Hwy 62 Driving East: Turn RIGHT at Old Woman Springs Rd/Joshua Lane. Go 1 Block to Post Office. Turn LEFT at Yucca Trail. Go 3 Blocks to Lucerne Vista Ave and Turn RIGHT (Cactus Apts. on Corner) 7654 Lucerne Vista Ave (Last House on RIGHT) just before Onaga.

Title: Weird Trailer

Size: 16 X 20 Year: 2011



Diana Shay Diehl

www.dianashaydiehl.blogspot.com

Showing First Weekend with Krista Wargo



8444 Bannock Trail, Yucca Valley

Title: Ethereal Desert

Printed on linen rag and metal

Size: 16 x 20 Year: 2013



Krista Wargo

Showing First Weekend
With Diana Shay Diehl



8444 Bannock Trail, Yucca Valley

Title: Two Lanes

Oils on Canvas Board

Size: 18 X 24" Year: 2012

Studio 25 Directions: RIGHT at light for ACOMA TRAIL (Jelly Donut on the corner). Head south on ACOMA TRAIL. (Pass through one stop sign) Sharp RIGHT on GOLDEN BEE as Acoma ends. (Stay on paved road). 1st RIGHT on BANNOCK TRAIL (Open desert to your left). Studio is 4th house on the LEFT (Huge pines in front yard)

2013 OPEN STUDIO ART TOURS

John Greenfield



Showing Both Weekends
With Bonnie Brady, Susan Brady Gonzales

56790 Desert Gold, Yucca Valley

Directions from Hwy 62 Driving East: Turn signal (south) at Sage Ave. (Denny's)- cross 2 stop signs (Onaga and Joshua Dr.) and proceed 4 blocks to Desert Gold, turn right.

Sculpture



Bonnie Brady



Showing First Weekend with John
Greenfield, Susan Brady Gonzales

56790 Desert Gold, Yucca Valley

Directions from Hwy 62 Driving East: Turn signal (south) at Sage Ave. (Denny's)- cross 2 stop signs (Onaga and Joshua Dr.) and proceed 4 blocks to Desert Gold, turn right.

Title: Butterfly Effect

Acrylic on Canvas

Size: 24" x 18"

Year: 2013



Susan Brady Gonzales



Showing First Weekend
With John Greenfield, Bonnie Brady

56790 Desert Gold, Yucca Valley

Directions from Hwy 62 Driving East: Turn signal (south) at Sage Ave. (Denny's)- cross 2 stop signs (Onaga and Joshua Dr.) and proceed 4 blocks to Desert Gold, turn right.

Title: Beaded Leather Bag

Size: 11" x 8"

Year: 2011



2013 OPEN STUDIO ART TOURS



John Whytock

www.johnwhytockart.com



Showing First Weekend

56670 Kismet Rd., Yucca Valley

Directions from Hwy 62 Driving East: In Yucca Valley, go to Sage Ave (traffic light) turn right (south), quick turn to right (west) on Yucca Trail, go 100 feet into left turn continuing south up Sage. Go approx. 2 miles almost to the end of Sage. Turn right (west) on Kismet, go to top of hill on right.

Title: Ram in Rocks

Size: 24" X 30"

Year: 2012



Christine Lamb

www.embellishedlamb.com



Showing First Weekend
With Ray Lamb

8762 Alaba Ave., Yucca Valley

Title: Group of Paintings

Color pencil and or ink on paper

Size: 2 1/2 x 3 to 3 1/2 x 5 unframed



Ray Lamb

www.fineartlamb.com



Showing First Weekend
With Christine Lamb

8762 Alaba Ave., Yucca Valley

Title: Another Desert

Oil on Canvas Back stapled silhouette framed

Size: 32 x 24 - 35 1/2 x 26 1/2 framed

Year: Oct 24, 2012

Studio 28 Directions from Hwy 62 Driving East: Turn South on Joshua Lane from hwy 62 for 2.6 miles. Turn Right on San Vicente. 3 blocks turn Left on Juarez and 1/2 block turn right on Alaba Ave. We are the house at the end of the cul-de-sac.

2013 OPEN STUDIO ART TOURS

Esther Shaw

estershawsart.com



Showing First Weekend

8289 Palomar Ave., Yucca Valley

Directions from Hwy 62 Driving East: 8289 Palomar Ave., Yucca Valley. From Hwy 62, south on Avalon, continue onto Palomar Ave. Look for 8289 mail box on left after passing Keats/Carlyle.

Title: The Vanishing Bobcat, #10

I want to bring attention to the hunting of bobcats. They are transparent - vanishing.

Size: 23" x 32"

Year: 2013



Barbara Spiller

barbaraspillerarts.com



Showing First Weekend

58933 Journey Lane, Joshua Tree

Directions from Hwy 62 Driving East: Turn right (South) on to LA Contenta (just past Home Depot). From Westbound 62, turn left on to La Contenta. Continue across Yucca Trail where La Contenta becomes dirt. Drive 1.25 miles to Journey Lane. Turn Left house is second on the left #59833

Title: Partial Eclipse

Found metal, wood, embossed copper, etching

Size: 14" x 9"

Year: 2012



Oasis Office Supply

www.myoasissupply.com



Showing Both Weekends

56925 Yucca Trail, suite D, Yucca Valley

Directions from Hwy 62 Driving East: Turn South on Sage. The building will be directly in front of you

Oasis Office Supply is an official Information Center for Hwy 62 Art tours, and features lots of local artwork.



2013 OPEN STUDIO ART TOURS



Mae Fox

Showing First Weekend

6929 Grand Ave., Yucca Valley

Directions from Hwy 62 Driving East: 3.5 blocks north of Hwy 62, 1 block west of Sage; turn right if going west.

Title: Navajo Maiden

Size: 24 x 30

Year: 2012



Judy Wold

www.judywold.com

Showing Both Weekends

60433 Sonora Road, Yucca Valley

Directions from Hwy 62 Driving East: Turn left (North) on Sunburst, travel 2.5 miles to Golden. Turn right (East) on Golden, .5 miles to Border. Turn left (north) on Border, go 2.5 miles to Sonora. Turn left (West) on Sonora, travel 2.5 miles on a bumpy dirt road to 60433 Sonora.

Untitled

Oil on Linen

Size: 16" x 16" Year: 2013



Margie Trandem

Showing First Weekend

6841 Joshua Lane, Yucca Valley

Directions from Hwy 62 Driving East: From Hwy 62 turn left onto Hwy 247 (Old Woman Springs Rd) Go past the Circle K on the left and just past the wash, turn left onto Sunnyslope. Make the very next right turn onto Joshua Lane. My home is directly across from the Cavalry Baptist Church

Title: Morning Snow

Size: 11x14

Year: 2013



2013 OPEN STUDIO ART TOURS



Nichole Vikdal

www.facebook.com/kiln2perfection

Showing First Weekend with Susan Madsen

57326 Crestview Dr., Yucca Valley

Title: Green Crystalline Ocean Bowls
Size: 9 1/2" x 1 1/2" and 11 1/2" x 1 1/2"
Year: 2013



Susan Madsen

Showing First Weekend with Nichole Vikdal

57326 Crestview Dr., Yucca Valley

Title: Desert Oasis
Monotype
Size: 12"x24"
Year: 2012



Studio 35 Directions from Hwy 62 Driving East: Turn north on Old Woman Springs Rd. Turn east on Crestview Dr. (first road on right hand side after airport) House is first on the left directly on corner of OWS and Crestview, the first house on your left.



Emily Frasher

www.emilialouisa.com

Showing First Weekend with Nany Miehle

57604 Sunnyslope, Yucca Valley

Title: Moon Agate
Size: 4.4x5.2 Year: 2013



Nancy Miehle

www.Chaparralartists.com

Showing First Weekend with Emily Frasher

57604 Sunnyslope, Yucca Valley

Title: Equestrienne Extraordinaire
Oils
Size: 16x20 Year: 2013



Studio 36 Directions from Hwy 62 Driving East: Turn left on Airway Ave. Go 1 1/2 blocks on Airway. Take a right on Sunnyslope which runs parallel to the airport. The house is in the middle of the block on the left.

2013 OPEN STUDIO ART TOURS



Reuven Wallack

www.reuvenwallack.com
Showing Both Weekends



57523 Old Mill Rd, Yucca Valley

GPS GIVES CONFUSING DIRECTIONS, FOLLOW THESE INSTEAD: Turn left onto Old Woman Springs Road or CA-247. About 3/4 mile, take a right on Paxton. After 5 streets on left (about 3/4 mile), you will see the 6th left, Imperial Drive. Start looking for a hand made white post on the RIGHT, which is Old Mill Rd. This is an unpaved road. (If you pass Warren Vista on right you have gone too far). Take the right onto Old Mill Rd and after some turns it will dead end at a house with a chain link fence. If you have any questions, please call me at 401-297-1622

Title: Portrait of Jack | Size: 16X12 | Year: 2000



Casey Cross

Showing First Weekend
With Daniela Bellissimo, Kat La Haye



6309 Palo Alto, Yucca Valley

*Title: Time Current
black ink pen drawing
Size: 10"x12" Year: 2012*



Daniela Bellissimo

www.italiancactus.com

Showing First Weekend
With Casey Cross, Kat La Haye

6309 Palo Alto, Yucca Valley

*Title: "COSMOS"
Size: 60x48 Year: 2013*



Kat La Haye

Showing First Weekend
With Daniela Bellissimo, Kat La Haye

6309 Palo Alto, Yucca Valley

*Title: Kaos Earrings
Size: 4" x 1" Year: 2013*



Studio 38 Directions from Hwy 62 Driving East: Turn Left (N) on Old Woman Springs Rd to Paxton. Right (E) on Paxton to Palo Alto. Left (N) on Palo Alto to 6309-top of the hill!

2013 OPEN STUDIO ART TOURS

Ed Keesling

www.edscayworks.com

Showing First Weekend

558775 Wilmar Ave, Yucca Valley

Directions from Hwy 62 Driving East: turn left (N) onto Yucca Mesa Road. Drive one mile to Douglas Ln. Turn left (W) onto Douglas and drive 1/2 mile to the church building at the corner of Indio and Douglas. Turn Right (N) onto Indio. Go one block to Wilmar Ave. (a dirt road). Turn Left (W) onto Wilmar. Drive 1/2 mile to the red house with white trim at the end of the road. Follow the driveway around to the back of the house to the Ed Keesling Clayworks Studio. Easy parking and turn-around.

Title: Lizard Bowl

Size: 4" x 5 1/2 Year: 2013



Andrea Jungert

RaspberrTart.wix.com/desert-diva-designs

Showing Both Weekends
With Beth Abaravich

58982 Los Coyotes Drive, Yucca Valley

Title: Rust Felted Collar

100% Felted Wool Collar

Year: 2013



Beth Abaravich

bethabaravich.carbonmade.com

Showing Both Weekends
With Andrea Jungert

58982 Los Coyotes Drive, Yucca Valley

Title: Nowheregirls

Year: 2013



Studio 40 Directions from Hwy 62 Driving East: Studio Directions: Hwy 62 east to Yucca Mesa Road. Turn left on Yucca Mesa Road to Memory Lane. Turn left on Memory Lane to Linda Lee. Turn Left on Linda Lee to Los Coyotes Drive. We are located on the northwest corner of Los Coyotes and Linda Lee

2013 OPEN STUDIO ART TOURS



Karen Caygill



Showing Both Weekends

58979 Los Coyotes, Yucca Valley

Directions from Hwy 62 Driving East: Turn left (N) onto Yucca Mesa, left (W) onto Wilmar, right (N) on Linda Lee (first right after Paradise View), house is on the corner of Linda Lee and Los Coyotes.

Title: 24 inch bottle
Year: 2012



Marya Fields



Showing Both Weekends
With Sherry Kimmel, Virginia Neal

59262 Romans Road, Yucca Valley

Title: Butterfly Cuff
seed beads on leather
Size: 2" x 7" Year: 2004



Sherry Kimmel

www.kimmelart.com



Showing Both Weekends
With Marya Fields, Virginia Neal

59262 Romans Road, Yucca Valley

Title: Ned
Size: 8"X10" Year: 2012



Virginia Neal



Showing Both Weekends
With Sherry Kimmel, Marya Fields

59262 Romans Road, Yucca Valley

Title: Power of Color
Acrylic
Size: 18 x 20 reproduction of this art Year: 2007

Studio 42 Directions from Hwy 62 Driving East: From HWY 62, turn left on Yucca Mesa Rd., go north 1.4 miles. On the left side (west) of the road is marked "Neals". Driveway is across Yucca Mesa Rd.(west) from the Security Dr. sign. Go between the 2 fences to enter property. Actual entrance to property is just north (past) of the large mailbox marked 59262 Romans Rd.

2013 OPEN STUDIO ART TOURS



Aaron Scott

www.coyotetowncreations.com

Showing First Weekend with Mike Fagan

768 El Dorado Ave., Yucca Valley

Title: Quasimoto

Size: 18x24

Year: 2011



Mike Fagan

www.magiconthemesa.com

Showing First Weekend with Aaron Scott

768 El Dorado Ave., Yucca Valley

Pottery & Photography

Year: 2012



Studio 43 Directions from Hwy 62 Driving East: Turn left (north) on Hwy 247, turn right (east) on Aberdeen, turn right (south) on El Dorado Ave.



Linda Romatko

Showing First Weekend with Tammy Romatko

2096 Old Woman Springs Rd., Yucca Valley

Title: MiniClock

Scrolled from 1/4 inch paduc wood.

Size: 4" x 8.5" Year: 2012



Tammy Romatko

Showing First Weekend with Linda Romatko

2096 Old Woman Springs Rd., Yucca Valley

Title: Monty

11x14 Digital Print 2011

Size: 11x14 Year: 2011



Studio 44 Directions from Hwy 62 Driving East: From HWY 62, turn Left on Old Woman Springs Rd (HWY 247) Travel exactly 7 miles, located on the left hand side at 2096 Old Woman Springs Road. Enter at driveway of Canine Country Kennels.

2013 OPEN STUDIO ART TOURS



Lee Scott

lee-scott.fineartamerica.com



Showing First Weekend

1221 Kickapoo Trail, Yucca Valley

Directions from Hwy 62 Driving East: Go north 9 miles on Old Woman Springs Rd. (Hwy 247) Turn Left (W) on Starlight Mesa. Go 1 mile to end. Turn Right (N) on Kickapoo Trail. Go 100 yards, on right.

Title: Yucca 9

Size: 13 x 19

Year: 2011



Steven Rieman

www.riemansculpture.com



Showing First Weekend

1188 Tahoe Ave., Yucca Valley

Directions from Hwy 62 Driving East: Go 8 miles north on Hwy 247 to Starlight Mesa, turn right. Go to Cambria (about 2/3 mile). Turn right. Go a few hundred feet to Vin Rose. Turn left. Go a few hundred ft. to Tahoe Ave., turn left. About 1/8 mile on the right you'll see our buildings, metal roofs, sky lights.

Title: Tree Hugger

Materials: Stainless Steel

Size: 9' X 4.5' X 2' Year: 2008



Paul Morehead



Showing Both Weekends

58384 Starlight Mesa Rd., Yucca Valley

Directions from Hwy 62 Driving East: Left/North on Hwy. 247/Old Woman Springs Road (go 4.9 miles) Right/East on Aberdeen Drive (go 2.9 miles) Left/North on Avalon Road (go 2.5 miles) Left/West on Starlight Mesa Road to (go 0.1 mile).

Title: Crimson & Granite

Archival quality print on aluminum.

Size: 20" x 30"

Year: 2012

2013 OPEN STUDIO ART TOURS

Marcia Geiger

www.geigarts.com



Showing First Weekend

60426 Lutz Ave, Landers

Directions from Hwy 62 Driving East: Head north from Hwy 62 on CA-247 N/Old Woman Springs Rd 10 mi. Turn right onto Reche Rd 6 mi. Turn left onto Booth Rd 0.2 mi. Turn **left** onto Lutz Ave, first house on the right. Some GPS & online map directions may tell you to turn right on Lutz - this is incorrect!

Title: Joshua Tree Bud #1

Oil on oil primed linen

Size: 24"x24" Year: 2013



Tina Bluefield

www.tinabluefield.com

Showing First Weekend



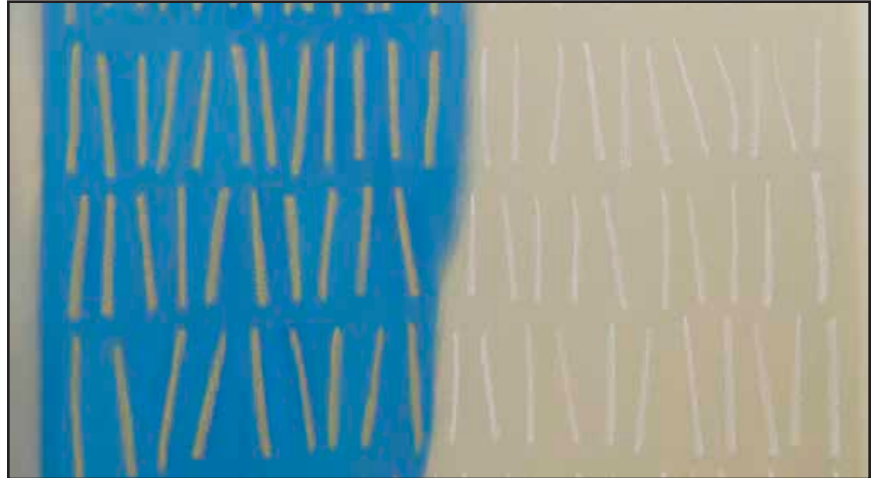
60756 Birdie Rd., Landers

Directions from Hwy 62 Driving East: North (Left) on Old Woman Springs Road (247) about 8 mi. to Reche Rd. East (R) on Reche about 5 mi. to Bowman Trail. South (R) on Bowman (dirt road) about 1.5 miles past Napa then East (left) on Birdie. Studio is on left, about 1/3 mile. **FROM JOSHUA TREE:** North (Left) on Sunburst. East (Right) on Golden (follow the pavement). North (left) on Border to Winters. West (left) on Winters (dirt road) a little over 2 miles, past Sunny Vista. North (right) on Via Maria to Birdie Road. West (left) on Birdie, first house on right. Studio is pale gray stucco with purple trim.

Title: BEACH DAY

oil on canvas

Size: 30" x 24" Year: 2013



Scott Doten

studioshangrila.com

Showing Both Weekends



919 Shangrila

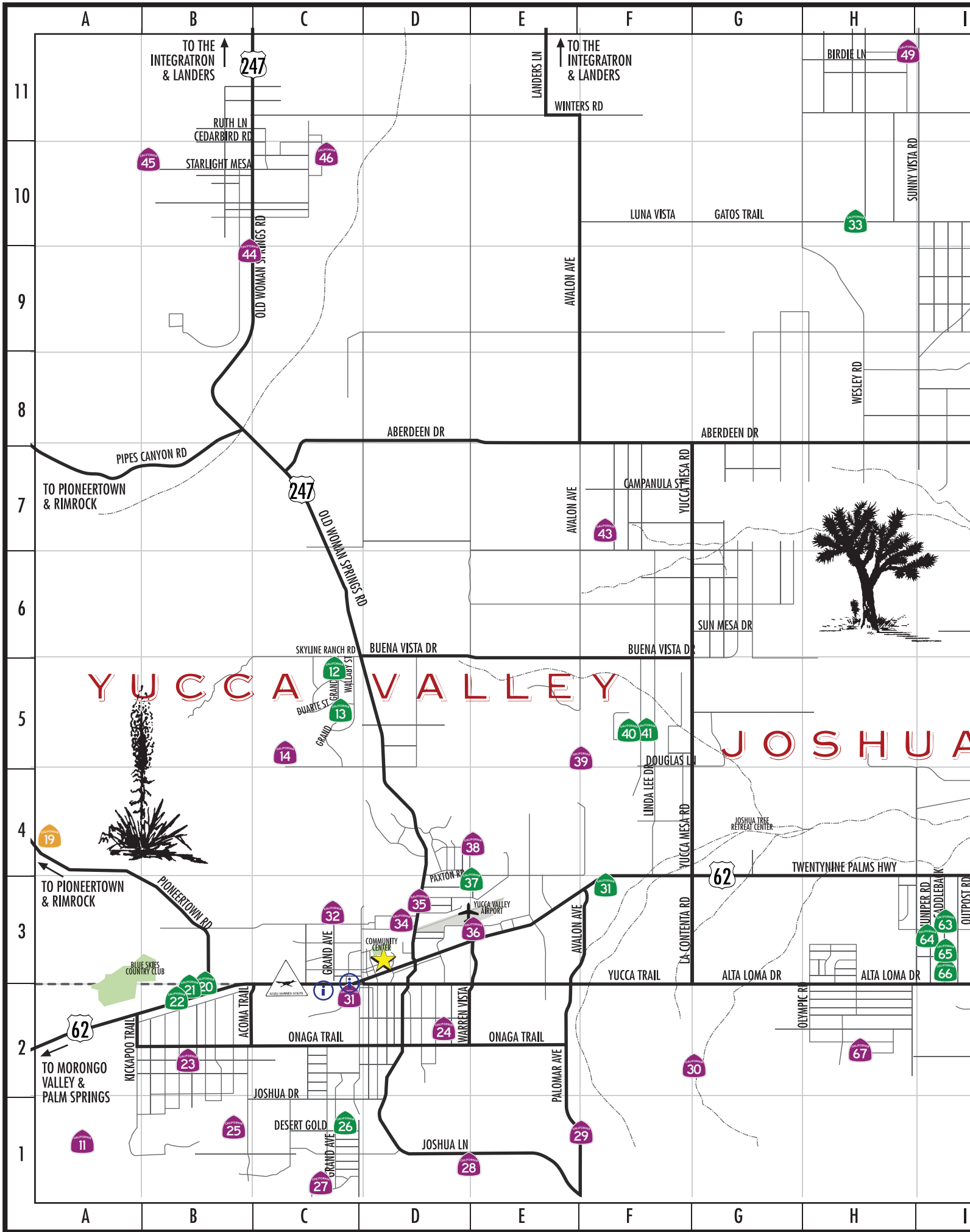
Directions from Hwy 62 Driving East: Turn right (North) onto Suburst Ave. Right, on Golden. Left on Border. Go about 4 miles then Left on Winters Rd. (dirt). Go 1.4 miles to Large metal building at 919 Shnagrila, entrance off of Winters.

Title: Color Fun

Size: 18" x 24"

Year: 2012





YUCCA VALLEY

JOSHUA

TO THE INTEGRATRON & LANDERS

TO THE INTEGRATRON & LANDERS

TO PIONEERTOWN & RIMROCK

TO PIONEERTOWN & RIMROCK

TO MORONGO VALLEY & PALM SPRINGS

BLUE SKIES COUNTRY CLUB

JOSHUA TREE RETREAT CENTER

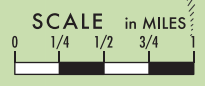
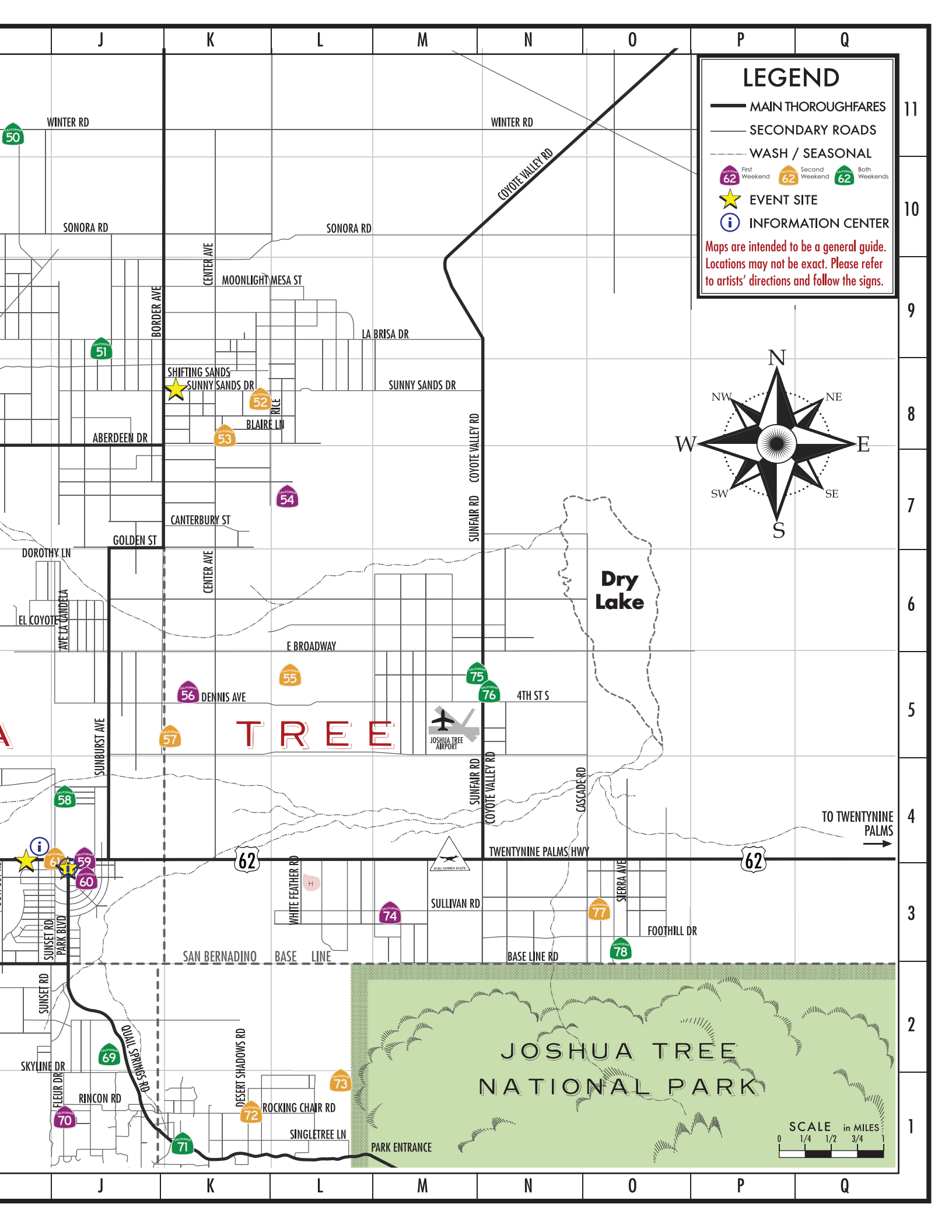
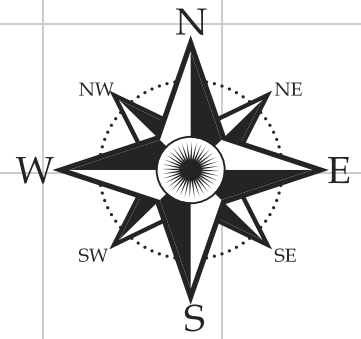
COMMUNITY CENTER

YUCCA VALLEY AIRPORT

LEGEND

-  MAIN THOROUGHFARES
-  SECONDARY ROADS
-  WASH / SEASONAL
-  62 First Weekend
-  62 Second Weekend
-  62 Both Weekends
-  EVENT SITE
-  INFORMATION CENTER

Maps are intended to be a general guide. Locations may not be exact. Please refer to artists' directions and follow the signs.



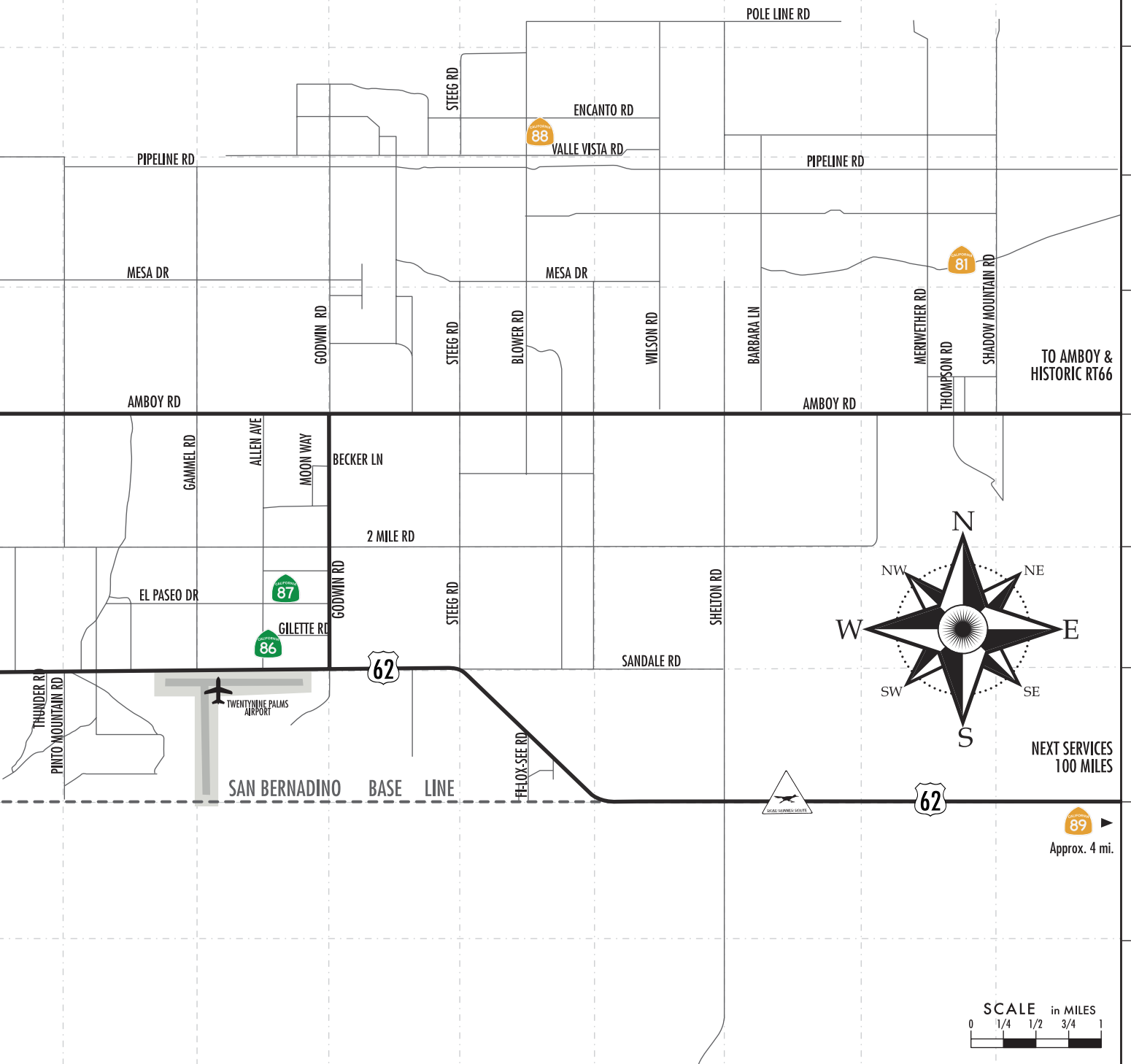
LEGEND

-  MAIN THOROUGHFARES
-  SECONDARY ROADS
-  WASH / SEASONAL
-  First Weekend
-  Second Weekend
-  Both Weekends
-  EVENT SITE
-  INFORMATION CENTER

Maps are intended to be a general guide.
Locations may not be exact. Please refer
to artists' directions and follow the signs.



W O N D E R V A L L E Y



TO AMBOY &
HISTORIC RT66

NEXT SERVICES
100 MILES

89
Approx. 4 mi.

SCALE in MILES
0 1/4 1/2 3/4 1

ALPHABETICAL INDEX OF ARTISTS

OCTOBER 19 - 20 and OCTOBER 26 - 27, 2013

Open Studio Tour Hours: 9am to 5pm

Aaron Scott #43	James Hagerty #6	Mita Markland Barter #85
Alita VanVliet #66	James Hammons #61	Moira Fain #68
Allen Robison Barter #85	James O'Keefe #57	Nancy Miehle #36
Anahita King #75	Janis Commentz #65	Nichole Vikdal #35
Andrea Jungert #40	Jason Graves #11	Noah Purifoy #53
Andrew Eiden #89	Jenifer Palmer-Lacy #55	Oasis Office Supply #31
Audrey Green #18	Jerry & Justina Looney ... #20	Patrice Cooley #1
Barbara Drucker #52	Jimm & Joann Petersen ... #12	Patrick William Kelly #7
Barbara Spiller #30	John Greenfield #26	Paul Klopfenstein #13
Bedilion Photography #84	John Whytock #27	Paul Morehead #47
Beth Abaravich #40	Judy Wold #33	Perry Hoffman Tile House.. #87
Bill Dahl #13	Karen Caygill #41	Pioneertown Music Co. #16
Bobby Furst #72	Karine Swenson #64	Radio Free Joshua Tree .. #62
Bobette Milici #15	Kat La Haye #38	Rainbow Stew #22
Bonnie Brady #26	Kate Madigan #1	Ray Lamb #28
Brian Leatart #58	Kathi Klopfenstein #13	Reuven Wallack #37
Cactus Mart #3	Kathryn Butterfield #5	Robert Arnett #86
Casey Cross #38	Kathryn L. Hunter #89	Robert Rico #79
Christine Lamb #28	Keith North #77	Salvatore Sinare #14
Coco Hall #58	Krista Wargo #25	Sanford Berlove #24
Craig Schoenbaum #80	Kurosh #69	Scott Doten #50
Cynthia Cox #54	La Bonetto #51	Sebastiano Grasso #2
Dan Bartlett #9	Laura Eaton #1	Shari Elf #59
Daniela Bellissimo #38	Leah Solo #4	Sherry Kimmel #42
David C Greene #88	Lee Scott #45	Simi Dabah #76
David Jesse McChesney ... #66	Lenne Rosen-Kabe #56	Snake Jagger #8
Deane Locke #13	Linda Romatko #44	Steven L Rieman #46
Diana Shay Diehl #25	Lisa Starr #74	Succulent Surprises #10
Donna Eastman #82	Lorelei Greene #88	Susan Abbot #60
Doug Whitfield #83	Louise Marler #72	Susan Brady Gonzalez ... #26
Ed Keesling #39	Lulu Stewart #19	Susan Madsen #35
Eliazbeth Green #63	Mae L. Fox #32	Suzen Smallwood #18
Ellen Hill #71	Marcia Geiger #48	Sweet Digs #21
Ellie Tyler #63	Margie Trandem #34	Tami Wood #8
Emily Frasher #36	Marjorie Franklin #65	Tammy Romatko #44
Esther Shaw #29	Mark Bulwinkle #77	Tammy Sioux #70
Eva Montville #73	Mark Doolittle #78	Theann Hayes #65
Friderich Rudolph #23	Mark E Heuston #81	Tina Bluefield #49
Geoffrey Fennell #17	Marya Fields #42	Toni M. Callaway #67
Georgia Toney #82	MazAmar Pottery #17	Tony Milici #15
Gretchen Grunt #83	Michael Eiden #89	Valerie Davis #63
Hilary Sloane #68	Mike Fagan #43	Virginia Neal #42

2013 OPEN STUDIO ART TOURS

La Bonetto

www.labonetto.com

Showing Both Weekends

2575 Manana Ave, Joshua Tree

Directions from Hwy 62 Driving East: Hwy 62 to Sunburst go Left. To Golden go right. To Border go left. Go approx 1-3/4 miles to La Brisa and turn left. Go 1/2 mile to Manana and turn left.

ERIC BANAS

ERIC SAKS

STEVE RUIZ

COLE BANAS

RUSHINGWIND & MUCKLOW



Barbara Drucker

www.barbaradrucker.net

Showing Second Weekend

2950 Rice Road, Joshua Tree

Directions from Hwy 62 Driving East: North on Sunburst, East on Golden, North on Border, East on Aberdeen, North on Rice Road.

Title: *JT Red Swing*

Size: 36"x60"

Year: 2012



Noah Purifoy

Outdoor Desert Art Museum

www.noahpurifoy.com

Showing Second Weekend

63030 Blair Lane, Joshua Tree

Directions from Hwy 62 Driving East: Joshua Tree to Yucca Mesa St. Left on Yucca Mesa. to Aberdeen. Right on Aberdeen (cross Border St.) to dead end at Center Ave. Turn left on Center (roads are unpaved). Curve to right into Blair Lane (also unpaved road). You will see Noah's Desert Art Museum on the left.

Title: *65 Aluminum Trays*

Size: 11H x 24W Year: 2000



2013 OPEN STUDIO ART TOURS



Cynthia Cox

www.whitefeatherstudio.com



Showing First Weekend

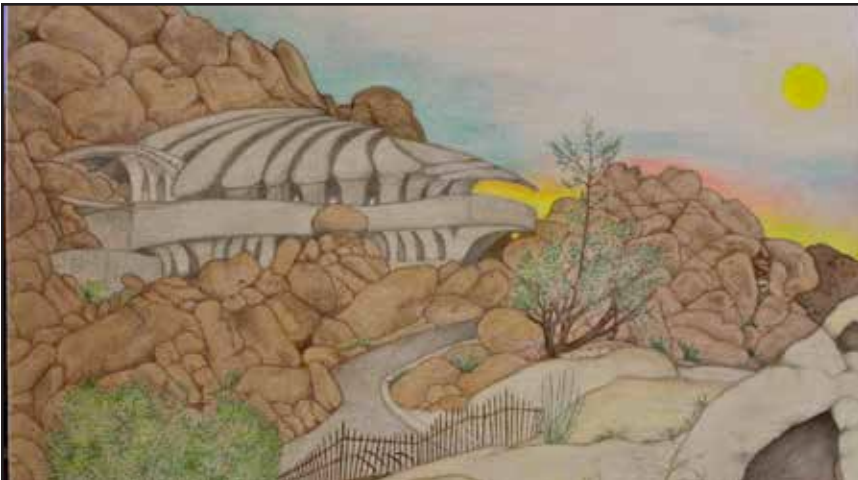
63425 Kelly Circle, Joshua Tree

Directions from Hwy 62 Driving East: North on Sunburst, right on border, left on Border. Go .5 miles to Belmont. Right on Belmont, 1 mile (do not go up the hill.) Right at the arts sign to Kelly Circle curving to the left.

Title: Sonora Wave Bracelet

Sonora Sunrise cabochon on Sterling Cuff

Year: 2013



Jenifer Palmer-Lacy

Showing Second Weekend



63558 Walpi

Directions from Hwy 62 Driving East: North on Sunfair past the airport to Broadway; turn west (left) on Broadway to La Ferney; turn south (left) on La Ferney, then right onto Walpi. Log cabin studio is on the right; park on street.

Title: Doolittle House Sunrise

prismacolor, acrylic, and luminous on recycled canvas

Size: 18x24 Year: 2012



Lenne Rosen-Kabe

www.lennerosenkabe.com



Showing First Weekend

62576 Dennis Avenue, Joshua Tree

Directions from Hwy 62 Driving East: Turn left on Sunburst, then right on Dennis. House is on the left.

Title: Red Sky (morning)

Oil on canvas

Size: 20"X20"

Year: 2013

2013 OPEN STUDIO ART TOURS

James O'Keefe

www.jamesokeefeart.com



Showing Second Weekend

5401 Border Ave., Joshua Tree

Directions from Hwy 62 Driving East: Turn left on Sunburst St in Joshua Tree, go 1 mile to Crestview and turn right. Go to the end of Crestview and make a left on Border Ave(unpaved) Go 5 blocks to 5401 Border Ave . The O'keefe studio is on your right.

Title: The Way to my House

Acrylic paint on panel

Size: 43 " X 43 "

Year: 2012



Brian Leatart

www.brianleatart.com



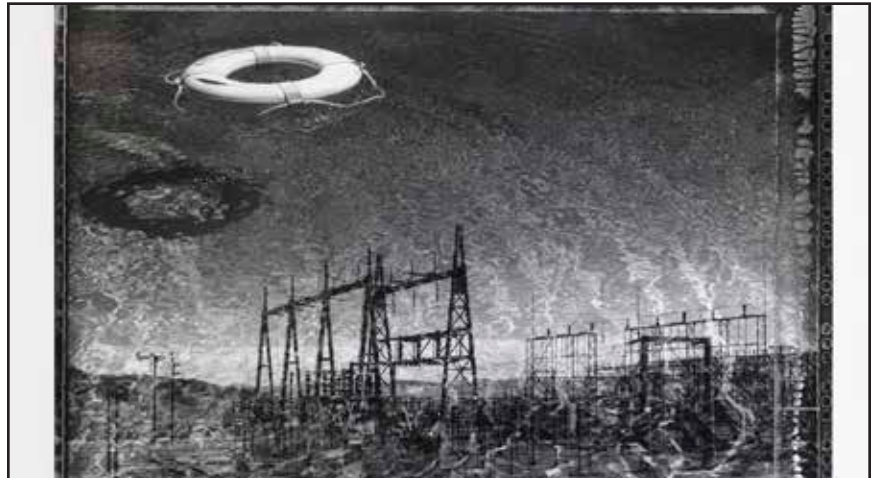
Showing Both Weekends
With Coco Hall

61721 Oleander, Joshua Tree

Title: Water and Power

Size: 20x24

Year: 2010



Coco Hall

www.cocohall.com



Showing Both Weekends
With Brian Leatart

61721 Oleander, Joshua Tree

Title: Box of Addictions

Papier mache, acrylic paint

Size: 13" x 14.5" x 5"

Year: 2013



Studio 58 Directions from Hwy 62 Driving East: Turn left at Sunset (at the big orange bldg., JT Trading Post). Go one-half mile north on Sunset. Turn right at Oleander. Second house on the right with the orange doors!

2013 OPEN STUDIO ART TOURS



Shari Elf
Art Queen / The Famous Crochet Museum
www.sharielf.com



Showing First Weekend

61855 Twentynine Palms Hwy, Joshua Tree
 Downtown Joshua Tree on Hwy 62

Title: I'm ok You're ok
 Year: 2013



Susan Abbott
Dancing Wind Studio



Showing First Weekend

61970 El Reposo Circle, Joshua Tree
Directions from Hwy 62 Driving East: First light after Joshua Tree Saloon in Downtown Joshua Tree, end of 1st block on right (at Desert Air).

Title: She Embraces Her Genius
 Watercolor
 Year: 2011



James Hammons
at The Natural Sisters Cafe and Gallery
www.JamesHammonsArt.com



Showing Second Weekend

61695 Twentynine Palms Hwy, Joshua Tree
 Downtown Joshua Tree on Hwy 62

Title: Quail Family
 Size: 34" x 32"
 Year: 2012



Mil-Tree's "The Art of War"
at Radio Free Joshua Tree Listening Lounge
www.radiofreejoshuatree.com
www.mil-tree.org



Showing Both Weekends

61597 Twentynine Palms Hwy, Joshua Tree
 Downtown Joshua Tree on Hwy 62
On Turtle Island, in the former location of Red Arrow Gallery and Beatnik Cafe, on the south side of Highway 62.



2013 OPEN STUDIO ART TOURS



Elizabeth Green

Showing Both Weekends
With Ellie Tyler, Valerie Davis

6786 Saddleback Rd, Joshua Tree

Title: Turquoise Swirl
Set with turquoise inlay. Precision cut.
Size: 15' x 6'
Year: 2012



Valerie Davis

Showing Both Weekends
With Elizabeth Green, Ellie Tyler

6786 Saddleback Rd, Joshua Tree

Title: Opuntia Mandala
Photo collage with hot glue and acrylic
Size: 18" x 18"
Year: 2013



Studio 63 Directions from Hwy 62 Driving East: Turn right (S) onto Saddleback Rd. 3/10 mi. Studio is well marked, on the east side of Saddleback Rd.



Ellie Tyler

www.ellietyler.com

Showing Both Weekends
Elizabeth Green, Valerie Davis

6786 Saddleback Rd, Joshua Tree

Title: House on Fire
Size: 24x30
Year: 2012



Karine Swenson

www.karineswenson.com

Showing Both Weekends

6925 Juniper Road, Joshua Tree

Directions from Hwy 62 Driving East: Turn south onto Sunny Vista Drive. Take Sunny Vista to the stop sign at Alta Loma. Turn East on Alta Loma. Turn north onto Juniper Road. Drive one and a half blocks to 6925 Juniper Rd. House on right hand side of road.

Title: Speed Walking
Collage, acrylic and oil on canvas
Size: 16 x 20 inches Year: 2013



2013 OPEN STUDIO ART TOURS



Marjorie Franklin

www.marjoriefranklin.com



Showing Both Weekends
With Theann Hayes, Janis Commentz

7132 Saddleback Rd., Joshua Tree

Title: After the Scream

Size: 16"x12"

Year: 2013



Theann Hayes

Showing First Weekend
With Marjorie Franklin



7132 Saddleback Rd., Joshua Tree

Title: Masculine Feminine Energy

Size: 24" x 16"

Year: 2011



Janis Commentz

janisrcommentz.blogspot.com



Showing Second Weekend
With Marjorie Franklin

7132 Saddleback Rd., Joshua Tree

Title: You Don't Say

Acrylic on gessoed paper

Size: 14" x 17"

Year: 2013

Studio 65 Directions from Hwy 62 Driving East: From Hwy 62 turn Right (S) onto Sunny Vista Dr. Take Sunny Vista Dr. to the stop sign at Alta Loma (3 long blocks). Turn left (E) onto Alta Loma. At the 2nd street, turn left (N) onto Saddleback Rd. It is a dirt road. 7132 Saddleback Rd. is one long block down from Alta Loma. The house is on the left hand side at the corner of Alta Visa and Saddleback Rds.

2013 OPEN STUDIO ART TOURS

David Jesse McChesney
www.Outmywindows.com
www.MilesOfWonder.com
www.AmericanBirdlife.com



Showing Both Weekends
With Alita Van Vliet

7236 Saddleback Rd., Joshua Tree

Title: Lunar Ring over Joshua Tree
Size: 14" x 11"
Year: 2008



Alita Van Vliet
www.alitavanvlietart.com



Showing Both Weekends
With David Jesse McChesney

7236 Saddleback Rd., Joshua Tree

Title: Inner Poppy
Size: 36" x 48"
Year: 2012



Studio 66 Directions from Hwy 62 Driving East: Turn south (uphill) onto Sunny Vista Rd. Drive up to stop sign and turn left at Alta Loma. Go two short blocks to Saddleback Rd and turn left again. Studio is three doors down and on the left.

Toni Callaway



Showing First Weekend

60555 Onaga Trail, Joshua Tree

Directions from Hwy 62 Driving East: Turn right on La Contenta and go up the hill to Yucca Lane. Turn left on Yucca Lane and go east to Olympic. Turn right on Olympic and go up the hill to Onaga Trail. Turn left and go east to the corner of Wesley and Onaga Trail. 60555 Onaga Trail is on that corner.

Peace stone, prehnite, onyx, & crystal beads, with sterling silver findings



2013 OPEN STUDIO ART TOURS



Hilary Sloane

www.takeheart2.com



Showing First Weekend with Hilary Sloane

58125 Jack Rabbit Road, Joshua Tree

Title: End of the Day

Part of a series of photographs of local cowboys and ranchers, printed on metallic paper, limited ed.

Size: 13 x 19

Year: 2010



Moira Fain

Showing First Weekend with Moira Fain

58125 Jack Rabbit Road, Joshua Tree

Title: Aluminum Study



Studio 68 Directions from Hwy 62 Driving East: Take Hwy 247, turn right on Reche Road, turn left onto Landers Lane in front of the Landers post office. Jack Rabbit is the sixth left; studio drive is the first left. GPS system will not work.



Kurosh Showghi

Showing Both Weekends

7950 Quail Springs Road, Joshua Tree

Directions from Hwy 62 Driving East: 62 east Joshua Tree. Right on Quail Springs road. Toward the Park entrance. We are on the right a few miles up. 7950 Quail Springs Road.

Title: Hard wood Didgeridoo

Year: 2012



2013 OPEN STUDIO ART TOURS



Tammy Sioux Parkhouse

Showing First Weekend



8475 Fleur, Joshua Tree

Directions from Hwy 62 Driving East: Head south on Sunset, turn right on Alta Loma, quick jog and turn left on Sunset. Turn left on Skyline. Turn right on Fleur, go a half mile (pass Rincon and Parkview) to corner of Fleur and Joshua Trail. Studio on the left.

Title: Selection of Products

Year: 2012



Ellen Hill

www.tseka.com



Showing Both Weekends

62677 Quail Springs Rd., Joshua Tree

Directions from Hwy 62 Driving East: Turn right (south) on Park Blvd. Travel 3.1 miles. Park turns into Quail Springs Road.

Title: Deep Canyon Verses

Watercolour / Lacquer on paper, collage elements

Size: 32" x 64" Year: 2012



Bobby Furst

www.bobbyfurst.com



Showing Second Weekend with Louise Marler

8528 Desert Shadows Road, Joshua Tree

Title: Star Wars

Assemblage

Size: 78" X 78" Year: 2011



Louise Marler

www.typewritersaresexy.com



Showing Second Weekend with Bobby Furst

8528 Desert Shadows Road, Joshua Tree

Title: Type Cast by L. A. Marler

Year: 2012

Studio 72 Directions from Hwy 62 Driving East: Park Blvd. south (becomes Quail Springs Rd.) 3.9 miles, left on Desert Shadows Rd., .4 miles to 8528 Desert Shadows Rd., big Quonset buildings on left side of street.

2013 OPEN STUDIO ART TOURS



Eva Montville

www.evamontville.com



Showing Second Weekend

8427 Rock Haven Road, Joshua Tree

Directions from Hwy 62 Driving East: Turn right (south) off Hwy 62 onto Park Blvd (turns into Quail Springs after crossing Alta Loma). After 5 miles from Hwy 62, turn left (north) onto Rock Haven. Turn right at Singletree, and left on Rock Haven. Continue to 8427 Rock Haven (1/2 mile from Quail Springs Road). Park on gravel and follow signs to studio.

Title: Slot Canyon 1

medium - catalpa wood

Size: 16" x 11" x 8" Year: 2003



Lisa Starr

www.lisastarr.net



Showing First Weekend

6920 Bonita Avenue, Joshua Tree

Directions from Hwy 62 Driving East: In Joshua Tree, once you pass White Feather at the CHP and Hospital, go three dirt road blocks to Arizona. Take a right on Arizona (dirt road) to the top of the hill. Left on Sullivan. Go two dirt road blocks and we are on the corner of Sullivan and Bonita. Bonita Domes is on the right.

Title: Eagle's Vision

Elk Hide, Cedar Hoop, Wood Carved Eagle Fetish, White Clay Bead

Size: 21 inch diameter Year: 2012



Anahita King

www.anahitaking.com



Showing Both Weekends

64847 Tonto Drive, Joshua Tree

Directions from Hwy 62 Driving East: Turn North (left) onto Sunfair (on GPS sometimes shows up as Coyote Valley). Go 1.75 miles, pass little airport on left and sculpture garden on right. Tonto Drive is second street on the left and you want the third house on the left.

Title: Teapot.turquoise.petroglyphs

Cone 5 stoneware

Size: 8x12 Year: 2012

2013 OPEN STUDIO ART TOURS

Simi Dabah



Showing Both Weekends

5255 Sunfair Rd., Joshua Tree

Directions from Hwy 62 Driving East: East on Hwy 62, Left on Sunfair, approx. 1 mile on right.

Title: Eagle

Size: 12x12

Year: 1970



Keith North at Harrison House



Showing Second Weekend
With Mark Bulwinkle

6881 Mt. Lassen Avenue, Joshua Tree

Title: Goddess Guitar

Size: 17" x 64" Year: 2013

Title: Altoids Woman

Size: 6" x 16" Year: 2012



Mark Bulwinkle at Harrison House



Showing Second Weekend with Keith North

6881 Mt. Lassen Avenue, Joshua Tree

Title: FEATHERED FRIEND Windwinkle Kinetic
Sculpture

Size: 8'W X 4'H, Standing Height 10' 10"

Year: 2013



Studio 77 Directions from Hwy 62 Driving East: Harrison House is at 6881 Mount Lassen Avenue, Joshua Tree: From Hwy 62, south on Mount Lassen approximately 1/2 mile. Destination will be on left side of road.

2013 OPEN STUDIO ART TOURS



Mark Doolittle

www.markdoolittlestudio.com



Showing Both Weekends

7284 Mt. Shasta Ave., Joshua Tree

Directions from Hwy 62 Driving East: Take Mt. Shasta Avenue south to the end of the road. My studio is at the end of street on the right side of the road (west) opposite the large home among the rocks.

Title: Live Edge

Hand-carved wood sculpture. Wood is Amboyne Burl (sculpture) and Claro Walnut (base).

Size: 11" x 7" x 6" Year: 2013



Rico

www.subatomicgallery.org



Showing Second Weekend

70875 Twentynine Palms Hwy, 29 Palms

Directions from Hwy 62 Driving East: 2.2 miles east of Indian Cove. Slow to a crawl passing High Desert Animal Hospital, Elk's Lodge, "Welcome to 29 Palms" signs. Turn right into driveway IMMEDIATELY after Bella Vista Mobile Home Park, (red mailbox). Park anywhere behind big red garage, red house.

Title: MOOD 4

sandpaper, ink on paper, fabric, photo paper, oil on canvas

Size: 48 x 48" Year: 2011



**Craig Schoenbaum
at Roughley Manor Inn**



Showing Second Weekend

74744 Joe Davis Drive, 29 Palms

Directions from Hwy 62 Driving East: Turn north on Utah Trail 0.8 mi. Turn right on Joe Davis Drive 0.4 mi east. Roughley Manor is on the left.

Title: Barker Beauty

Digital photograph

*Size: 12"x18" matted photo print in 18"x24" frame
Year: 2010*

2013 OPEN STUDIO ART TOURS

Mark Heuston

Showing Second Weekend



83230 Garden Ave.

Directions from Hwy 62 Driving East: Left on Godwin Road. North on Godwin Road to Amboy Road, right on Amboy Road. East on Amboy Road to Shadow Mountain Road, left on Shadow Mountain Road. North on Shadow Mountain Road 1 & 1/4 mile. Studio will be to your left; it's the pink cabin with solar panels on the roof. Look for the studio tour signs.

Title: *Bighorn Sheep*

Cast aluminum

Size: 13" x 6" x 12"

Year: 2012



Donna Eastman

Showing Second Weekend
With Georgia Toney



73881 Old Dale Rd., 29 Palms

Title: *Rattlesnake Canyon After the Rain*

Oil Painting

Size: 4x4



Georgia Toney

www.countryandsouthern.com

Showing Second Weekend
With Donna Eastman

73881 Old Dale Rd., 29 Palms

Directions from Hwy 62 Driving East:



Title: *Lost @ See*



Studio 82 Directions from Hwy 62 Driving East: Turn right off Hwy 62 at National Park Blvd. in 29 Palms, follow signs to 29 Palms Inn. At Inn entrance on Cottonwood, turn right onto Cottonwood. Go 1/2 block and turn right off unpaved road section to rear of property

2013 OPEN STUDIO ART TOURS



Gretchen Grunt

www.GretchenGrunt.com

Showing Second Weekend
With Doug Whitfield

6847 Adobe Road, 29 Palms

Title: All One

Size: 10x10"

Year: Dec 2012



Doug Whitfield

[www.29palmscreativecenter.com/
stainedglass.html](http://www.29palmscreativecenter.com/stainedglass.html)

Showing Second Weekend
With Gretchen Grunt

6847 Adobe Road, 29 Palms

Title: Indian

Size: 36x24"

Year: 2013



Studio 83 Directions from Hwy 62 Driving East: Turn south onto Adobe Road, proceed 3 blocks towards the mountains of JTNP to the orange building on the left, directly across the street from the old Barr Lumber and located on the west end of the 29 Palms Inn property.



Michael Bedilion

Bedilion Photography

www.mbedilionphoto.com

Showing Second Weekend

73738 Foothill Drive, 29 Palms

Directions from Hwy 62 Driving East: Turn South off Hwy 62 in Twentynine Palms. Go .75 miles to Foothill Drive. Make a left (east), first place on the left.

Title: Trail from Crater

Amboy Crater

Size: 8 X 12 inches Year: 2012



2013 OPEN STUDIO ART TOURS

Allen Barter

www.aridimage.com

Showing Both Weekends
With Mita Barter

74043 Twilight Drive, 29 Palms

Title: Golden Shadows

Size: 20" x 48"

Year: 2012



Mita Barter

www.mitabee.com

Showing Both Weekends
With Allen Barter

74043 Twilight Drive, 29 Palms

Title: Story

Size: 6"x4"

Year: 2013



Studio 85 Directions from Hwy 62 Driving East: Turn Right (S) on Adobe Road, turn Left (E) on Baseline, turn Right (S) on Desert Knoll (dirt) and Right (W) on Twilight Drive. The studio is behind the orange house.

Robert Arnett

www.robertarnetfineart.com

Showing Both Weekends

6340 Allen Ave., Wonder Valley

Directions from Hwy 62 Driving East: 6 miles to Allen Ave, North of airport turn left. Second house on left.

Title: Lazy One #2

SOLD

Size: 12x24

Year: 2012



2013 OPEN STUDIO ART TOURS



Perry Hoffman
Tile House
www.magentaraven.com



Showing Both Weekends

79188 El Paseo Rd, 29 Palms

Directions from Hwy 62 Driving East: Traveling east from 29 Palms, going approx 7 miles, just past the airport turn north on Godwin and then in three streets turn west on El Paseo. My studio and Tile House is first house on the north side of the road.

Title: Universal Holiday Boy
Size: 14"x9"
Year: 2013



David Greene
www.dcgart.weebly.com



Showing Second Weekend
With Lorelei Greene

3229 Blower Rd., Wonder Valley

Title: Obscured by Clouds 1
Size: 11" x 11"
Year: 2011



Lorelei Greene
www.pavannejewelry.com



Showing Second Weekend
With David Greene

3229 Blower Rd., Wonder Valley

Title: FLOATING
Size: 3 1/4" X 1" Year: 2013

Title: IMAGINE
Size: 2 3/4" x 1" Year: 2013

Studio 88 Directions from Hwy 62 Driving East: go 6 mi past Utah Tr, turn left (N) at Godwin, go 2 mi. to the intersection with Amboy Rd. Turn right (E) go 1 1/2 mi. Turn left (N) onto Blower Rd. (The road is immediately next to the Wonder Valley Community Center & Fire Dept.) Go north on Blower Rd 2 mi. The house is on the right.

2013 OPEN STUDIO ART TOURS

Andrew Eiden



Showing Second Weekend
With Michael Eiden, Suzanne Dellinger,
Kathryn Hunter

100 Rocks Art Studio
86975 Twentynine Palms Hwy, 29 Palms

Title: Sky on Fire
Year: 2008



Michael Eiden

www.oldmaninthedesert.com



Showing Second Weekend
With Andrew Eiden, Suzanne Dellinger,
Kathryn Hunter

100 Rocks Art Studio
86975 Twentynine Palms Hwy, 29 Palms

Title: Sun Nuggets
Year: 2013



Kathryn Hunter



Showing Second Weekend
With Andrew Eiden, Michael Eiden,
Suzanne Dellinger

100 Rocks Art Studio
86975 Twentynine Palms Hwy, 29 Palms

Title: Madagascan Chameleon
Watercolor
Size: 8" x 11"
Year: 2011



Studio 89 Directions from Hwy 62 Driving East: It is exactly 14.9 miles from the flashing yellow light at the intersection of Utah Trail & Route 62. Drivers should slow and prepare to turn when they see the Iwo Jima replica on the left. There is also a huge radio tower at a defunct bar and gas station just before the turn. A mosaic address marker and yellow arrow at the driveway mark the turn off the highway, on the right. If drivers cross Ironage Road, they've gone too far and should u-turn and try again.

2013 ART TOURS SPONSORS

The Art of Communication



We are proud to serve our community as the trusted source of local news, sports and information in the Hi-Desert communities.



Hi-Desert Star Publishing Co.

People you know, news you can trust

Hi-Desert Star

56445 29 Palms Hwy. Yucca Valley, CA 92284
(760) 365-3315 www.hidesertstar.com

The Desert Trail

6396 Adobe Road 29 Palms, CA 92277
(760) 367-3577 www.deserttrail.com



"Before you buy on the Internet think about where your dollars go. Shopping local keeps them here so our communities can grow."

Artists need to promote their work — we can serve that need.

FULL COLOR PRINTING

posters, postcards, announcements, brochures, portfolio copies, business cards

We PRINT just about EVERYTHING!



VALLEY INDEPENDENT PRINTING

56445 29 Palms Highway, Yucca Valley, CA 92284

(760) 365-6967

www.viprintandcopy.com
viprintandcopy@verizon.net

2013 ART TOURS SPONSORS

**Studio #77
on the
Art Tours!**



ARTISTS-IN-RESIDENCE

Mark Bulwinkle
Keith North

October 26-27 • 10am-5pm

6881 Mount Lassen Avenue, Joshua Tree
Info: 760.366.4712
www.harrisondocumentary.com

ROUGHLEY MANOR
BED & BREAKFAST
www.roughleymanor.com
(760) 367-3238



**Studio #80
on the
Art Tours!**

Jan & Gary Peters
Swimming Pool Hot Tub
Wireless Internet Satellite TV
Gourmet Breakfast Military Discounts
74744 Joe Davis Dr. Twentynine Palms, CA 92277

**Studio #31
on the
Art Tours!**



WE SUPPORT LOCAL ARTISTS



BUSINESS COMMUNITY CENTER & STORE

GET IT ALL DONE

- ✓ Office & Art Supplies
- ✓ Graphics & Printing
- ✓ Computers & Wifi
- ✓ Local Art & Gifts
- ✓ Copies & Scans
- ✓ Fax & Notary
- ✓ Pack & Ship

**56925 YUCCA TRAIL
YUCCA VALLEY, CA
(760) 365-1773**

WWW.OasisOffice.COM

2013 ART TOURS SPONSORS

Paul Morehead Photography

Outdoor Images for Indoor Spaces

Producing large scale photographic images to inspire wonder, promote serenity or excite the senses.



Please join us both weekends of the 2013 Highway 62 Art Tours.

Hwy 62, North on Hwy 247/Old Woman Springs Road, Right on Aberdeen Road,
Left on Avalon Road, Left on Starlight Mesa Road.



760.364.4567

58384 Starlight Mesa Road, Yucca Valley, CA 92284

PaulMorehead.com

As Always, a Great Selection of Radio Control Cars and Aircraft!

Arts & Crafts

Polymer Clay * Candle Making
Leathercraft * Woodworking
Dremel * Xacto * Adhesives

**ACRYLICS OILS WATERCOLORS
BRUSHES KNIVES SKETCHPADS
CANVASES PORTFOLIOS GESSO
COLOR PENCILS CHARCOAL**



GROUND CONTROL HOBBIES

55696 29 Palms Highway | Yucca Valley 760/365-7366 | groundcontrol-rc.com |



2013 ART TOURS SPONSORS



Bruce Jones Dentistry

7255 Joshua Lane, Suite B
Yucca Valley, CA
(near the post office)
760-365-8331

www.yuccavalleydentist.com

a proud supporter of
the Hwy 62 Art Tours
2013



Sheric
REAL ESTATE
Property Management

- *Property Management*
- *Single Family Homes*
- *Investment Properties*
- *Optimized Web Presence*
- *20 Years Experience*

760-365-0800 info@sheric.net

56155 Twentynine Palms Hwy Ste B
Yucca Valley CA 92284

CA DRE Lic # 01365317



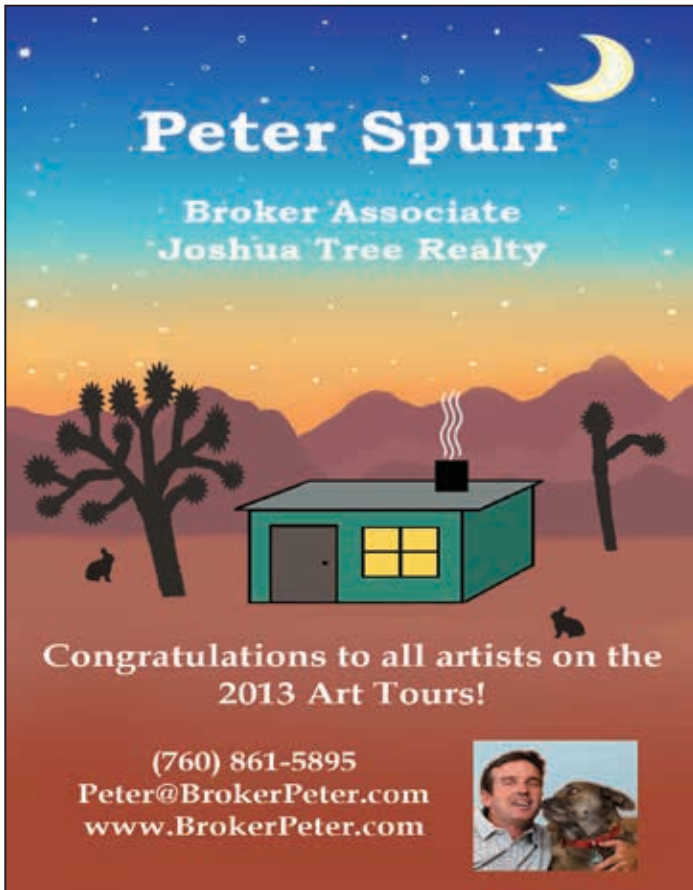
CALMADA

BOUTIQUE HOTEL & RESORT

www.destinationcalmada.com

Reservations: 1-760-228-3141


2013 ART TOURS SPONSORS



Peter Spurr
 Broker Associate
 Joshua Tree Realty

Congratulations to all artists on the
 2013 Art Tours!

(760) 861-5895
 Peter@BrokerPeter.com
 www.BrokerPeter.com




ACTION PUMPING, INC.
 7361 WAMEGO TRAIL, YUCCA VALLEY
 Phone: 760-365-0861
 E-Mail: actionpumpinginc@yahoo.com
 LICENSE # 436143 S-C
 - Serving the Desert Area Since 1961 -



Shari Elf
 Art Queen


- ★ Good & Sturdy Art
- ★ World Famous Crochet Museum
- ★ Shari Elf Boutique:
 Art, Pillows, dresses, T-shirts
- ★ Free green smoothies!
- ★ Art By "Art Not Walmart"
- ★ Free Aura Cleansing!

#59

61855 Hwy 62
 ShariElf.com



Dinner with Jesus



Studio #33
 on the
 Art Tours!

M²

JUDY WOLD
 310-384-7781
 Both Weekends

2013 ART TOURS SPONSORS

CROSSROADS CAFE

*Breakfast
Lunch
Dinner
Beer and Wine*

**~Open Everyday
7 am - 9pm~**

61715 29 Palms Hwy
(at the corner of Park Blvd)

JOSHUA TREE
(760) 366-5414
www.crossroadscafejtree.com

760-366-2250 + 61835 twenty-nine palms hwy joshua tree, ca 92252

JOSHUA TREE SALOON

BEST MENU IN TOWN ✦ **14 ICE COLD DRAFTS**



JOSHUA TREE
Health - Culinary
Healing Arts Center

Joshua Tree **HEALTH FOODS**
Your informed mind healthy body connection



Fresh Organic Produce,
Refr. & Frozen, Bulk & Pkg'd Foods,
Herbs, Supplements, Body Care
Organic Wines & Beer & Food
Pet Products, Apparel
joshuatreehealth@aol.com
(760) 366-7489
Open 7 days!

The Community's Natural Food Store
61693 29 Palms Hwy, Joshua Tree, CA 92252

7am - 7pm 7 days a week



The Natural Sisters
CAFE
A Healthy Foods Eatery

Organic Foods
Juice & Smoothie Bar
Natural Baked Goods
Vegan Choices
Delivery Service
Catering
760-366-3600
61695 B 29 Palms Hwy
Joshua Tree

Jenny
Oaquindah
RN, Herbalist
Proprietor



**760
366
8333**

Herb EcoMarket
Herb tincture line / Holistic health books
Aromatherapy bar / Jewelry
Quality bulk shampoos & lotions
Pregnancy & childcare products
www.gratefuldesert.com
www.gratefuldesert.com
61695 A 29 Palms Hwy, Joshua Tree

2013 ART TOURS SPONSORS

Studio #16
on the
Art Tours!



The John Linn Band performs
BOTH SUNDAYS at the Yart Party!

CUSTOM DESIGNED JOHN LINN GUITAR RAFFLE
Hwy 62 Art Tours Yart Party Oct. 19-20 and Oct. 26-27

Café Ma Rouge **Studio #20**
on the
Art Tours!

Come and see our artists
JP Looney and Stinez

55844 29 Palms Hwy Yucca Valley, CA 92284
www.marouge.net 760-365-4100 phone

Yummy Espresso, Sandwiches, Soups, & fabulous Quiche!

Rainbow Stew
Gifts for All the People to
Feed the Mind & Spirit
760-418-5170
55509 Twentynine Palms Hwy
Yucca Valley, CA 92284
Email: Rainbowstew4u@aol.com
Website: www.rainbowstew4u.com
Facebook: www.facebook.com/rainbowstew4u

Studio #22
on the
Art Tours!

CACTUS
MART

Cactus Mart
Purple Agave Art Gallery

Studio #3
on the
Art Tours!

49889 29 Palms Hwy Morongo Valley
www.cactusmart.net
(760) 363-6076

ami wood
tamiwoodcreations.com

Studio #8
on the
Art Tours!

760 774 2553 tamiwoodcreations@gmail.com

Ed Keesling Clayworks
Wilmar Ave Yucca Valley, CA 92284

Studio Open by appointment

- Call 760 365 8193
- E-Mail: ededkeesling@aol.com
- Web: http://edsclayworks.com

Studio #39
on the
Art Tours!

Reduction, high fired pottery, tiles
and sculpture

Whole sale, retail, consignment, and
commissions

4 Artists @ 1 Site!
plus live music & refreshments

Studio #13
on the
Art Tours!

B. Dahl - Photography
K. Klopfenstein - Basketry
P. Klopfenstein - Gourd Art
D. Locke - Watercolor

Oct. 19 & 20 - Oct. 26 & 27 **9 to 5**

Diane Mooradian Contemporary Quilts
5 - 27 October 2014



GLASS OUTHOUSE GALLERY
77575 Highway 62 ~ 29 Palms, California
760-367-3807

2013 ART TOURS SPONSORS

Like the Joshua Tree Community Jazzband on Facebook



Jazz Band

FOR BOOKING 2PC TO 13PC
GROUPS: 760-574-5212



Mojave WiFi

Morongo Basin's
Internet Service
Provider of Choice,
& Proud Supporter
of the Hwy 62
Art Tours!

We Strive to Exceed Expectations!

Reliable High Speed Internet now available!
Starting at only \$25.95/month
No Contracts and No Usage Limits!
(760) 366-7515 Service@mojavewifi.com



**THE
DESERT
LILY
BED & BREAKFAST**



With its spectacular panoramic views, The Desert Lily is a peaceful and delight-filled place to experience all that this high desert wonderland has to offer.

The Desert Lily
Bed & Breakfast | Desert Vacation Rentals
760-366-4676 | 877-887-7370 - thedesertlily.com

Boxo wishes all the artists, collectors, enthusiasts, curators, gallerists, and other interested and interesting parties a very inspiring and successful 2013 Hwy 62 Art Tours.

Please visit BoxoHOUSE on Sullivan Road west of White Feather Road in Joshua Tree, on the first weekend of Art Tours (10/19+20), to view long-term installations by Gosia Wlodarczak and Steed Taylor.

BoxoHOUSE
BoxoOFFICE
BoxoPROJECTS
CONTRIBUTORSHIP BY THE NEW ARTISTIES
WWW.BOXOPROJECTS.COM



(760) 361-1000

**72535 Twentynine Palms Hwy
Twentynine Palms, CA 92277**

www.hiexpress.com/29palms



- Awards
- Original Artwork
- Needlework
- Sports Memorabilia
- Military Medals
- Wedding Memories
- Vacation Pictures

Specializing in Custom Framing

HOURS: Tuesday - Friday 10am - 5pm
Saturday 10am - 4pm

(760) 365-3396

57246 29 Palms Highway
Yucca Valley • California
On the corner of Hwys 247 & 62

Family Owned Since 1991

**BE A
CONSERVATION
HERO**



Join us online today...
mojavedesertlandtrust.org



**First Nations
Home Finance**

Diane Giannelli
Senior Loan Officer-Direct Lender
CA DRE #01856154
NMLS #316284

7398 - B Fox Trail
Yucca Valley, CA 92284
Mobile: (760) 415-7982 Fax: (760) 365-5528
email: diane4loans@gmail.com
www.DianeGiannelli.com



2013 ART TOURS SPONSORS

Joshua Tree Embroidery Art

Affordable souvenirs & clothing

Always Available at
Joshua Tree Outfitters
61707 29 Palms Hwy
Downtown Joshua Tree
760-366-1848
stitchartstudio.com / joshuatreeoutfitters.com

Jackets, Hats, Book Covers
Framed Art, Prints & More...




Spin and Margie's
DESERT HIDE-A-WAY

Accommodations for the Experienced Traveler

FREE WiFi

www.deserthideaway.com
760-366-9124



QUARTER MOON

Handcrafted Jewelry
Gemstones ~ Curios

www.quartermoon.us



Don Risser
Licensed Acupuncturist

Hi-Desert Acupuncture Center
Serving the HI-Desert since 2000

7211 Joshua Lane Suite 5
Yucca Valley, CA 92284
760-228-2644



Serving Our Desert Communities Since 1984

SUE'S HEALTH FOODS

Supplements
Bulk Herbs
Aromatherapy
Body Care
Groceries-Bulk, Packaged
Refrigerated & Frozen
Organic Produce
Books & Gifts

Mon-Sat 9am-6:00pm
Join us on:
facebook

3Jn2 Sue Huber C.N. Licensed in CA
56840 29 Palms Highway, Yucca Valley • 760-365-1158
sueshealthfood@roadrunner.com • www.SuesHealthFoods.com

Something for Everyone!



Hi-Desert Nature Museum

- Permanent & Temporary Exhibits •
- Kids Corner & Mini-Zoo •
- Gems & Minerals Collection •
- Skulls & Fossils •
- Native American Artifacts •

Open Thursday through Saturday
10:00 a.m. to 5:00 p.m.
FREE Admission

Located in the Yucca Valley Community Center Complex
57090 Twentynine Palms Hwy, Yucca Valley • (760) 369-7212
www.hidesertnaturemuseum.org
~ Visit us on Facebook and view our video on YouTube ~
Nature, Culture, History, and Art of the Morongo Basin



2407.7 FM
Community Radio
Local News and Events
www.KCDZFM.com



Best Western GARDENS HOTEL AT JOSHUA TREE NATIONAL PARK
TWENTYNINE PALMS, CA 760-367-9141

"Friendliest Staff in the High Desert!"

Recently Renovated!

71487 29 PALMS HIGHWAY, 29 PALMS, CA 92277
www.bestwesterngardens.com



SPONSORS & THANKS



Joshua Treats
Gourmet Ice Cream Hand-
made in Joshua Tree
Pick up a pint -
there's 2 spoons
in the lid!

The Best Way To Chill

Now available at:
**Joshua Tree Health Food, Sam's
Market, Sue's Health Food in
Yucca, Indian Cove Market in
29, Hero's Market in Landers**



**MORONGO BASIN
AMBULANCE**



*A Non-Profit Organization
Proudly Serving the Morongo
Basin Since 1948*

Call About Our
Annual Membership

Individual.....\$50.00
Family\$85.00

760-366-8474

*"Visit this quaint Charming Motel
with a distinct history.
Pop Legends U2 stayed
at the Harmony,
why not U too!"*

Harmony Motel

- Internet Access
- Pool
- Cable Television
- Jacuzzi
- Fax & Copy Services
- Best Value in Town
- Selected Rooms with Fully Equipped Kitchens

760.367.3351

www.harmonymotel.com

71161 29 Palms Hwy, Twentynine Palms, CA 92277

WE WOULD LIKE TO THANK...

... all those who made this 12th year of the Hwy 62 Art Tours possible, including (but not limited to) the Morongo Basin Cultural Arts Council, and our sponsors, volunteers, and participating artists, along with the hosts and staff of this year's Art Tours special events.

Hwy 62 Art Tours Planning Team

Carey Hays, Tami Wood, Susan Henry, coordinators; Planning committee, contributors and volunteers: Andy Woods, Anne Beattie, Jimbo Gimson, Terry Hone, Eric Quander, Alita Van Vliet, Bonnie Brady, Cheryl Montelle, Paula Jeane, Cheryl Nankervis & the Gourd Art Festival committee, Cheryl Kandel, Diana Shay Diehl, Scott Doten, Snake Jagger, Ted Quinn, Fred Burke and the Radio Free Joshua Tree team, Shari Elf, Kathy Barta, Leslie Mariah Andrews, John Linn, Jim Zircon Oliver, Bobby Furst, and all volunteers who help out with the event.

Morongo Basin Cultural Arts Council

Carey Hays, Executive Director

Board Members: Jimbo Gimson, President; Tami Wood, Vice President; Terry Hone, interim Treasurer; Olivia deHaulleville, Secretary; Susan Henry, Events & Performance Director; Alita Van Vliet, Exhibits Director; Seth Shteir, Anne Beattie, Victoria Manning, general board members

Donation=Creation Store volunteers (2013): Bonnie Brady, Tracey Trotter, Susan Henry, Herman Platzke, Michelle Page.

Special Thanks

Jesse Henry, Allan Hays, Steve Brents, Bonnie Brady, Karine Swenson, Betty (Smiley) Young, Mita Barter, Hilary Sloane, Andrea Jungert Steve Rieman, Ellie Tyler, David McChesney, Doug Whitfield, Sebastiano Grasso, Marjorie Franklin, Michael Eiden, David Greene, Daniela Bellissimo, Lisa Starr, Marcia Geiger, Miriam Taylor, Thomas and Krista Wargo, Lorelei Greene, Sarah Habershon, Gerard Ledonne and staff at Joshua Tree Saloon, Ed Keesling and the 29 Palms Artists Guild, Joshua Tree Retreat Center, Thomas Fjallstam, Steve Brown, Gary Daigneault, David Fick, Cindy Melland, Kelly Carson, Melissa Sabol and staff at Oasis Office Supply, Jet Tucker, Lynelle White, and the Joshua Tree Chamber of Commerce.

Featured Art Tours Sponsors

City of Twentynine Palms, Arts Connection of San Bernardino County, Z107.7 Radio, Sun Runner, Radio Free Joshua Tree, Oasis Office Supply, Hi-Desert Publishing Co.

Apologies to any we have failed to mention above. We and the community value your contribution to this event. Thank you for supporting the arts in the Morongo Basin!

Monthly magazine published the first of each month!



desert moon
pictorial

REAL ESTATE

Commercial & Community Services in the Morongo Basin

Featuring our local Animal Shelters and Non-Profit Animal Rescues...

Distributed throughout the Morongo Basin and Coachella Valley
PLUS the worldwide web: www.DesertmoonPictorial.com

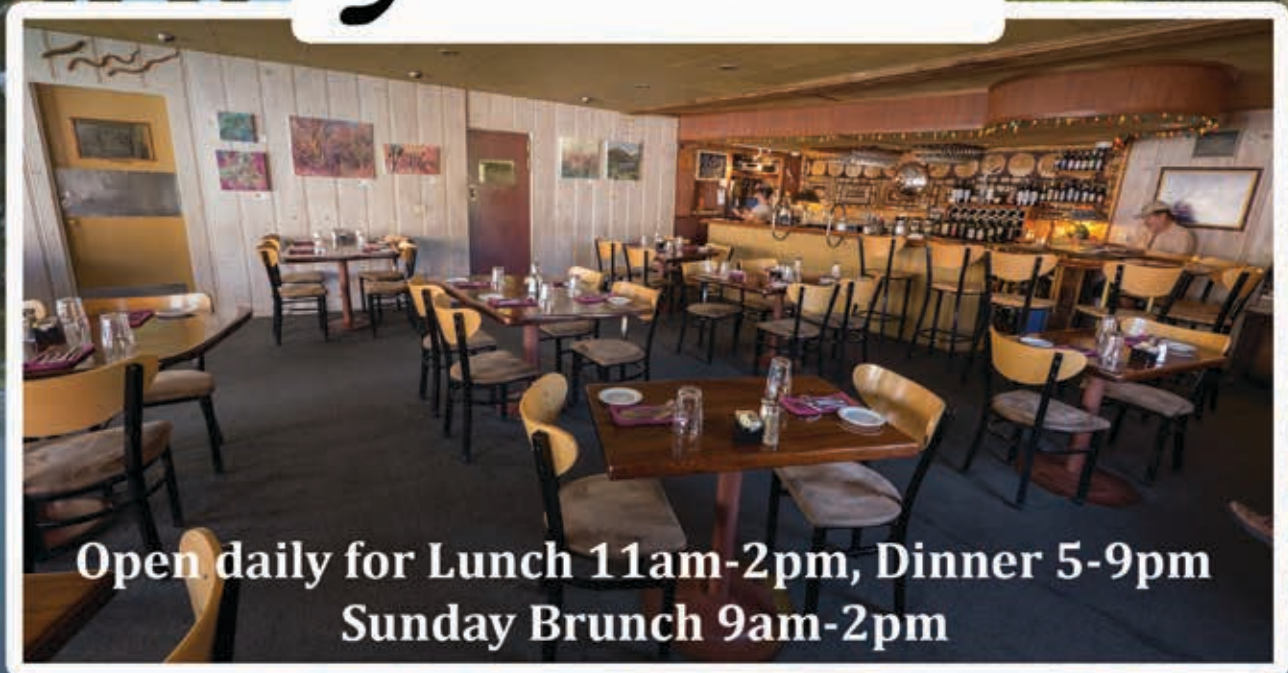
2013 ART TOURS SPONSORS

Enjoy a great meal at our Restaurant & Gallery,
where brilliant art rivals outstanding food!

Bi-monthly rotating art exhibits showcasing photography,
painting and mixed media.

Nightly dinner specials featuring organic fruits and vegetables
grown in our Faultline Farm.

29 PALMS INN



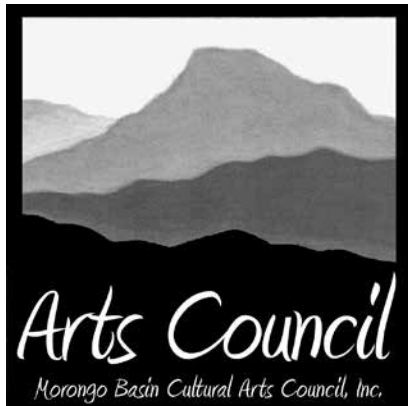
Open daily for Lunch 11am-2pm, Dinner 5-9pm
Sunday Brunch 9am-2pm

(760) 367-3505 www.29palmsinn.com
73950 Inn Ave, Twentynine Palms CA 92277



A proud host of the upcoming
Joshua Tree National Park
Art Show & Faire
December 6-7-8, 2013.
www.jtnpartfaire.com

Hwy 62 Art Tours is Presented by the Morongo Basin Cultural Arts Council



MISSION STATEMENT

The Morongo Basin Cultural Arts Council's mission is to inspire and enliven the community through the arts, and enhance the cultural and economic health of the region. We accomplish our vision through a range of activities and initiatives, large and small, local, outside the Basin, and online.

Building community through the arts, the Morongo Basin Cultural Arts Council continues to be a leading source of information, inspiration and energy for artists and patrons throughout the Morongo Basin and beyond.

MBCAC PROGRAMS FOR ARTISTS

Morongo Basin Cultural Arts Council is supported by memberships, donations, and volunteers to help us provide programs and promotional opportunities for artists, including:

DONATION=CREATION ART STORE

MBCAC sponsors an art supply thrift store, staffed by volunteers. We accept donations of new and gently used art supplies, books, canvases, frames, and more, sold to artists at affordable prices. MBCAC members receive an additional 10% off new items.



HWY 62 ART TOURS

MBCAC members are eligible to participate in one of the largest open studio art tours in the nation, drawing an estimated 8,000 people to the Joshua Tree Gateway Communities each year. Registration typically opens in the spring months, between early April and June.

MBCAC MEMBER EXHIBIT OPPORTUNITIES

MBCAC members in good standing are eligible to show at the following area venues:

- 29 Palms Inn
- 29 Palms Creative Center
- Bob Burke Joshua Tree Government Center
- Joshua Tree Library
- Pie for the People, Joshua Tree
- Joshua Tree Saloon
- MBCAC Office
- California Welcome Center

HELP SUPPORT MORONGO BASIN ARTISTS

Your support helps MBCAC provide these and other programs for our member artists.

- Become a MBCAC member! Individual annual membership starts at \$30 (\$10 for students).
- Contribute to our programs! MBCAC is a 501(c)(3) non profit; all donations are tax deductible.
- Donate your unwanted (and in good condition) art supplies to Donation=Creation store.
- Volunteer your time to work at MBCAC sponsored events, or at the art store
- Buy local art!

MORONGO BASIN CULTURAL ARTS COUNCIL
PO Box 643 ~ 6448 Hallee Rd. #10 ~ Joshua Tree CA 92252
760-366-2226 ~ info@mbcac.org ~ www.hwy62art.com





www.hwy62arttours.com

Snake Jagger
07